

# COMPUTER <sup>User</sup> <sub>News</sub>

Monthly Publication of the Kentucky-Indiana Personal Computer Users Group

**July 2006**

**Volume 25, No. 07**

Program Director .....	3
Editor's Note .....	3
Backup Awareness Month .....	4
Web 2.0 and The Evolution of the Small Office/Home Office	5
Internet Fraud .....	7
Microsoft Streets and Trips 2006 with GPS .....	8
Accessing Family Accounts in Cases of Emergency .....	10
Organizing the Favorites Menu .....	11
Directory .....	12
Calendar .....	13
SIG Directory .....	14
SIG Scene .....	15
Access .....	15
Advanced Users .....	16
Community Outreach .....	16
Digital Photography .....	16
Excel .....	17
Genealogy .....	17
Hands On .....	18
Hardware .....	18
Intermediate .....	19
Investing .....	19
New Users .....	19, 20
Real Estate .....	20
Technical Market Analysis ..	21
Utilities .....	21
Visual Basic .....	21
Webmasters .....	22
Windows OS .....	22
Membership Application .....	23

## KIPCUG

Presents

# Wireless Security

on

## July 11, 2006

Following the

# FREE COOK OUT

## 5:30-6:30 PM

General Public is invited to attend.  
Free Program Starts at 6:30 PM  
Directions - Page 3

[www.kipcug.org](http://www.kipcug.org)

# KIPCUG

# Advertising Rates for Magazine

<b>Ad size</b>	<b>Rate</b>
Per 1 col. inch (2.25" wide)	12.00
Half Page (3 col x 5")	140.00
Full Page	250.00

**NOTE:** Magazine is published electronically in addition to its printed edition. Advertising materials must be supplied in electronic form.

Ad sizes must be in full column width and in one inch depth increments.

<b>Discount</b>	<b>Rate</b>
Three consecutive insertions	10%
Twelve consecutive insertions	20%
Special discounts offered to Corporate KIPCUG members (In addition to other discounts)	Call

All Advertising must be paid for at the time of submission or on approved PO. Rates are for **electronic (TIF PDF)** copy in gray scale. The submission deadline for advertising materials is the first of the month for the next month's publication.

**Send all advertising materials to editor@kipcug.org.**

For advertising information contact Bill Buzan at bill.buzan@insightbb.com or 639-7647.

## Magazine Submissions

**Articles should be submitted as a Word document** and submitted one month in advance. If graphics are included, they should be submitted in TIF file format whenever possible. All graphics must be converted to TIF or PDF file formats before publication.

## KIPCUG Supporters

*Please support them with your business*

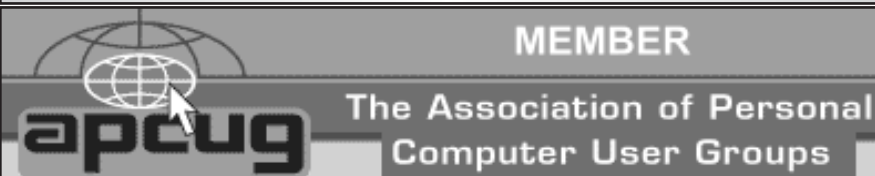
The vendors listed have contributed hardware or software to KIPCUG to assist in production of the organization's monthly newsletter. We encourage you to support these vendors who are helping to support our organization.

**Lexmark**  
**Adobe**

**Optra R+ Laser Printer**  
**PageMaker 6.5**

## Contributing Staff Writers

Charley May



KIPCUG is a member of APCUG, an international association of computer user groups. Information is available at [www.apcug.org](http://www.apcug.org)

**KENTUCKY-INDIANA  
PERSONAL COMPUTER  
USERS GROUP, INC.**

**291 N. HUBBARDS LANE  
SUITE B-26-318  
LOUISVILLE, KY 40207**

**EDITOR-IN-CHIEF  
SUSAN MOORE**

**SIG EDITOR  
CATHY TAGGART**

**COPY EDITOR  
NANCY WHEELER**

This magazine is published monthly by the Kentucky-Indiana Personal Computer Users Group, Inc. and is intended principally for its membership. All articles in this publication are copyrighted by KIPCUG unless otherwise stipulated.

Express permission is granted for qualified User Groups to copy the materials in this publication provided appropriate credit is given to KIPCUG, Computer User News and the author.

Requests from individuals or organizations other than User Groups for permission to reprint should be made to the Editor.

Advertising materials must be submitted four weeks prior to publication. Editorial submissions must be submitted three weeks prior to publication.

All editorial materials submitted become the property of KIPCUG, and may be used by the organization in any way deemed appropriate by the magazine staff and the Board of Directors of KIPCUG.

The editors reserve the right to make any changes deemed necessary to any editorial matter submitted or to refuse publication of any material submitted.

Direct all magazine correspondence to the Editor at KIPCUG, 291 N. Hubbards Lane, Suite B-26-318, Louisville, KY 40207 or to [editor@kipcug.org](mailto:editor@kipcug.org).

# Over the Program Director's Shoulder

By Susan Moore, KIPCUG

**July**

Win.Net and Hostaroo.com will be "hosting" a Free Cook Out for KIPCUG members and prospective members 1 hour before the General Meeting on July 11. There will be Hot Dogs, Brats, Chips and Soft Drinks on the menu. So come join us for some great summer food and networking from 5:30 to 6:30 PM.

Following the Cook Out we will have Back to Basics presented by Matt Mercurio on RSS Feeds. I am sure you remember Matt from the June presentation. User to User will follow. Remember this is your chance to ask all those questions you have been trying to get an answer for but haven't found some-

**WERE YOU THERE?  
ON JUNE 6  
THE NAME DRAWN WAS  
HAROLD RIGDON  
AND HE WAS NOT IN  
ATTENDANCE.  
NEXT MONTH  
THE PRIZE WILL BE  
\$50.  
WILL YOU BE THERE?**

one yet to ask. Bring your computer related questions to your friends at KIPCUG for your answer.

The main presentation will be presented by Tom Scanlan and Wayne Perkey on Wireless Security. This will be a continuation and an expansion of the Back to Basics May Presentation.

**Back to Basics Topic**

**RSS Feeds**

**Presented by  
Matt Mercurio**

**June**

Thanks to Ron Mattingly, the Director of Training for Lightyear Alliance, for the presentation on VoIP, i.e., Voice Over the Internet Protocol. This broadband service is being accepted by a rapidly expanding customer base. Three lucky members received a free month of service.

## Editor's Note

By Susan Moore, KIPCUG

In the coming months, you will see a variety of formats for the Computer User News. We are changing our format in an effort to cut costs without diminishing the information provided to our members.

On the odd numbered months for the remainder of 2006, we will post the Computer User News on the website as a pdf file and not print the magazine. This posting may contain more color than you normally see since we are not paying for the ink and the printing plates. In addition, we will mail you a "lite" version of the magazine to your regular mailing address.

On the even numbered months for the remainder of 2006, we will publish the Computer User News each month on paper and on the web. The printed version will be without color and 16 pages. The version on the web site may be larger and again may contain color.

This change was determined by the Board of Directors when the budget was passed for the current year. Advertising and more members are the best possibility for returning the magazine to the original format. Any suggestions? Please send your emails to me at [editor@kipcug.org](mailto:editor@kipcug.org) with Computer User News in the subject line.

### MEETING DIRECTIONS

Christ Church United Methodist  
4614 Brownsboro Road

From I-264 (Watterson X-Way) take the US-42/Brownsboro Road exit number 22 turning left onto Brownsboro Road if you were traveling East on I-264 (turn right instead if you were traveling West on I-264). Continue for about 0.6 miles turning left at the traffic light at Blankenbaker Lane and turn left into the Church parking lot. Look for the signs.

Maps are at [www.ccum.net](http://www.ccum.net) and [www.kipcug.org](http://www.kipcug.org)

# Backup Awareness Month

By Ira Wilsker, APCUG Director

## WEBSITES:

<http://www.backupawareness.com>

<http://www.ntius.com>

<http://www.symantec.com>

<http://www.backupawareness.com/bestpractices.html>



In case you had not heard, June is Backup Awareness Month. It is not a federally recognized holiday, nor is it one

acknowledged by resolution from some governmental authority, but an awareness service of one of the largest manufacturers of hard drives, the newly merged Maxtor and Seagate.

Sure, Maxtor and Seagate will benefit if we all rush out and purchase a large capacity hard drive so we can backup our critical data in the event of a hard drive crash, or other tragedy that can damage or destroy our computers. This is really more of a win-win situation, as there is a very valid need for timely and comprehensive backups of our data. Lessons still unlearned from Rita, Katrina, and Wilma, as well as other countless disasters, fires, thefts, and other debacles should teach us that if we have a good backup of our files, we can easily survive a catastrophic data loss, and be back in operation promptly.

Imagine in any business or other commercial environment how much information is stored on hard drives.

Hard drives are electromechanical devices, and as such will indeed fail at some time. Murphy's Law dictates that a hard drive will always fail at the most inopportune time. Now imagine what would happen to that business or organization if suddenly all of its critical information was gone. No accounts receivable; no accounts payable; no client lists; no purchase orders; no employee or student data; no payroll and tax records; no correspondence; no records of any kind; and a plethora of other potentially devastating losses. Next imagine the time and cost that a company would incur if it had to rebuild that amount of information from paper records, if the paper records indeed exist. Can you conceive the utter devastation that a company would suffer with a catastrophic data loss?

Data loss is not just a corporate or organizational threat, but a personal one too. On my home computer, for example, I have countless family photos, tax records, family financial information, archives of correspondence and other important documents, music, bookmarks, address books, email, and other information that would probably be irretrievable in the event of a complete hard drive failure. I really do not think that the IRS would accept, as an excuse, the fact that my hard drive crashed, losing my financial records.

We can backup our data in many ways without any substantial expense, or we can utilize sophisticated backup solutions. Backing up can be as simple as copying critical files to CD, DVD, flash drive, or other storage media, using the integral copy function available on all computer operating systems. We

can use software, such as NTI's Shadow or Backup NOW! to manage our backup functions to our chosen media, or we can use utilities such as Symantec's (Norton) Ghost, to make a bit by bit copy of our hard drive which can be copied to a new hard drive, making it a mirror image of the original, ready to go. Now that broadband internet connections are more of a rule than an exception, there are commercial services that will do online remote backup and storage at off-premise locations, secure and separate from the host or home location.

Seagate/Maxtor have published some "best practices" ([www.backupawareness.com/bestpractices.html](http://www.backupawareness.com/bestpractices.html)) defining the tasks necessary to insure the ability to recover our precious data. These practices can be summarized by the following tips (details on the website):

Develop a backup schedule - Make it routine, and not a task that we have to remember to accomplish. Most modern backup software and utilities either backup in real-time (NTI Shadow), or can be scheduled at predetermined times (NTI Backup NOW!).

Back up everything - it is not necessary to waste time sorting data, as the speed of backup utilities, hardware, and hard drives, as well as the large capacity of new hard drives, make it unnecessary to determine what to backup

Give yourself room to grow - The rule of thumb listed on the site recommends that the minimum size of backup drives (or other media or storage solutions) should be at least double the current size of the hard drives being backed up.

# Backup Awareness Month (cont.)

Back up automatically - Referred to in the industry as "Set it and Forget It", is a viable adjunct to backing up on schedule. Some real-time off-site backup services use a high speed internet connection to automatically back up all new data to an external location. Many software utilities are almost transparent, and perform backups automatically, and unattended.

Rotate backups - Use more than one drive or other system for backup. There are always risks that the backup itself can be damaged or otherwise flawed, and there is safety in redundancy. It is a good prac-

tice to store at least one current backup physically away from the location being backed up such that a catastrophe (fire, flood, etc.) at the host will not destroy the backup. It is also a good idea to be able to take a backup with you in the event of a crisis, such as when I took my external hard drive with a current backup of all of my files, when I evacuated from Hurricane Rita. With this external drive, I could also access critical files from another computer if needed, prior to returning home.

Don't procrastinate - Do not put off until tomorrow what you must be doing today. The complete

Murphy's First Law of Computing is, "A properly backed up hard drive will never fail, but the first time that you do not have a current backup, your hard drive will always fail at the most inopportune time." Sadly, all too many of us learn the importance of a backup immediately after our hard drive fails, as we come to the realization that all is lost.

June should not really be Backup Awareness Month; every month should be backup awareness month!

*Editor's Note: Ira Wilsker is a Columnist for The Examiner, Beaumont TX and a Radio Show Host.*

## Web 2.0 and The Evolution of the Small Office/ Home Office (soho)

By John Abbott, Member of the Bentsen Grove Resort Computer Club, Mission TX, [www.bgrcc.com](http://www.bgrcc.com)

Will the evolution of Web 2.0 have any lasting effect on the proprietary software vendors? I believe so to a limited extent. There are a myriad of new Web 2.0 companies springing up hourly. Each offering something unique to attract users. For some, this will prove satisfactory enough that they will no longer purchase proprietary mail programs or word processors, and possibly even spread sheets.

The advent of Open Office has most certainly put a dent in the profit margins of Microsoft's Office Suite. There is a new look coming from Microsoft Office that adds a lot of eye candy to their existing Suite, but not a lot of additional function. I believe that between

Open Source and the Web 2.0 companies the bottom line at Microsoft will feel their presence.

Even though Microsoft is reacting to the popular features of Mozilla's Firefox browser by copying most of them into Internet Explorer 7. IE7 still doesn't have several of the most advanced features of Firefox like ad blocking and several extensions made available for free download. And the folks at Mozilla aren't sitting around waiting for Microsoft to catch up, they are already beta testing Flock, a Web 2.0 oriented browser with blogging and social tagging built into its rich function package. However, if you don't consider yourself a true Web 2.0 Juggernaut then you may not enjoy it as much. It is designed to accommodate the blog grabbing and social bookmarking of web sites.

Google is clearly among the leaders in Web 2.0 features. They offer on line mail, on line calendar, financial portfolio tracking, the best search engine on the planet, news aggregated to your personal interests, image search, even a Linux search engine or a couple of other specialized search engines. And Google was the company that forced the email providers into offering 2 Gigabites of storage for their mail. [<http://www.google.com/intl/en/options/>]

But there are other companies close on the heels of Google. My current favorite is inbox.com. Inbox offers personalized email, with spell checker, rich text (font control) manageable folders and the absolutely best spam system on the Internet. You can set your Spam to capture any mail not from someone

# Web 2.0 (cont.)

in your address book. Or you can set it to challenge anyone not in your book and then hold that challenged mail in an "Unverified" folder where you can accept or permanently reject it. Along with the email, you are offered 2 Gb of storage with folders containing your various upload/download type: music, documents, pictures or files. And if that weren't enough, inbox also offers a calendar that emails you up to 3 reminders on calendared events. [<http://www.inbox.com>]

Another great company is Zoho. Zoho derives its name from SOHO (small office/home office) and it has laid in virtually everything one would need. The Zoho stable contains email, spread sheets, planners, collaborative white boards etc. Their banner program is Zoho

Virtual Office and it is complete with reminder calendars, email, a virtual drive (only with XP) Instant Messaging, task management, and all of it can be collaborative for up to 10 users. Not all of the features are available on the free packages, but a small version is available for you to try before you buy. [<http://www.zoho.com>]

The only thing missing from a small office/home office would be a telephone. Ah, but you can have that on-line too. From full service phone systems like Packet8 to totally free Gizmo and Skype. The packet8 system will give you an adapter to plug your phone into, or you can buy a Uniden phone system with a base phone and up to 10 wireless handsets for \$79. Or you can use your current phone connected into their

free adapter and your're up. Both systems carry a \$20 a month fee for caller ID, three-way calling, and your choice of area code and, depending on where you live, you can keep your phone number. If you want to get exotic, you can buy their VideoPhone and then pay the same \$20 a month.

[<http://www.packet8.net/>]

But for the true Web 2.0 user, Skype or Gizmo reign supreme. Each is totally free, and has adapters for a web camera. Of course, if you are not calling another SIP subscriber, you will have to buy an outgoing and an incoming outside line. I prefer using Gizmo because it has superior audio setup and a test point to call to check for echo suppression or the lack thereof. [<http://www.gizmo-project.com>] [<http://www.skype.com>]

And finally for setting up those conference calls, you can always use the services of Gizmo which offers a free conference system. For those using Gizmo, it is entirely free. For those checking into the conference from their cell phones or land line phone, they will pay the standard rate to their provider. There is a great company called Live Office that gives you much better control (mute, mute group, roll call, etc.) and it too is absolutely free and the quality of the connection much improved over Gizmo. And should you need to step up to a toll free call in system, Live Office offers them for a variety of rates.

[<http://freeconferencing.liveoffice.com/>]

Now you are equipped to take your entire home office with you in a USB thumb drive. Depending on the version you use, it can all be automatically encrypted. SOHO has become portable and secure.

*Editor's Note: John Abbott's email is john@bgicc.com. This article is distributed by the APGUG Editorial Committee.*

Free Seminars  
[Info: www.win.net/training.html](http://www.win.net/training.html)

"Possibly the best tech support in the business ..."  
PC Magazine

Call about our  
**KIPCUG Member Special**

**DSL**  
Up to 6.0 Mbps in Indiana  
Up to 3.5 Mbps in Kentucky

**Dial-up with 5X Acceleration**

**\$199 DSL-T1s**  
Available in Southern Indiana

**Win.Net**  
Internet

1048 E. Chestnut St, 2nd Fl.  
Louisville KY 40204  
(502) 815-7000 | 1-800-WIN-NET2  
[www.win.net](http://www.win.net) | [info@win.net](mailto:info@win.net)

Meeting your needs ... Exceeding your expectations

# Internet Fraud

By Bob Schneider, Editor of the PC Keyboard, the newsletter of the Spring Hill Teaching Computer Club, Hernando County, Florida  
[www.sthcc.net](http://www.sthcc.net)

Internet fraud continues to be the fastest growing crime in America (and perhaps the world). The most common technique for fraud today is "phishing." This means that some nefarious person connives you into providing financial account information. They do it by mailing thousands of spam emails to lists of email addresses they have accumulated. Perhaps one of your friends sent a neat joke to 40 acquaintances, including you (your friend's email itself is, of course, spam). Someone out there farms email addresses. They love it when your friend sends out those appeals and jokes because they know that every email address they capture (including yours) is current and good. They then send a message like the one below (actually received by the author) to those thousands of email addresses. It doesn't matter if you have PayPal or not. Many of the emails will hit someone who does, and they only need a lot of money from a few suckers to make the effort worth while. Of course, they substitute various bank names for PayPal, too.

"Dear valued PayPal® member:

It has come to our attention that your PayPal® account information needs to be updated as part of our continuing commitment to protect your account and to reduce the instance of fraud on our website. If you could please take 5-10 minutes out of your online experience and update your personal records you will not run into any future problems with the online service.

However, failure to update your records will result in account suspension. Please update your records.

Once you have updated your account records, your PayPal® session will not be interrupted and will continue as normal. Go to the link below.

[http://www.paypal.com/cgi-bin/webscr?cmd=\\_login-run](http://www.paypal.com/cgi-bin/webscr?cmd=_login-run)

Thank You.

PayPal® Security Center.

Accounts Management.

As outlined in our User Agreement, PayPal® will periodically send you information about site changes and enhancements.

Visit our Privacy Policy and User Agreement if you have any questions.

[http://www.paypal.com/cgi-bin/webscr?cmd=p/gen/ua/policy\\_privacy-outside](http://www.paypal.com/cgi-bin/webscr?cmd=p/gen/ua/policy_privacy-outside)

The first link (to "account records") does not go to PayPal, but goes to [www.doctori.biz/pp](http://www.doctori.biz/pp), a site run by thieves, waiting for you to log in and provide your user name and password for PayPal, or your bank account or other financial service. The login page will look exactly like that of your financial institution. Once you finish "updating" account information, you will be sent to that actual financial site where you can log in and see that everything is in order. The second link (to "Privacy Policy") is a real link to your financial service. It is another part of their smoke screen. But at three o'clock the next morning, there may be some new account activity. The next day, when you log in, you will likely find that every-

thing is no longer in order.

For your internet and financial safety, never respond to an email asking you to check your account. If you are curious, call your financial institution. Also, you can always log in to your account the usual way (not by clicking on a link you receive in an email) and check anything you wish.

A final note: tell your friends to stop broadcasting your email address to the world, to spammers, pornographers, body part enlargers and thieves. Tell them they can comply with your request if they stop forwarding jokes, requests and other such to you and their other friends. Better yet, send them a copy of this article. They deserve it.

*Editor's Note: Bob Schneider's email is [Drbob1012@hotmail.com](mailto:Drbob1012@hotmail.com). This article is distributed by the APGUG Editorial Committee.*

## Have you visited a SIG lately?

We have many Special Interest Groups.

Surely at least one of the SIGs would be of benefit to you.

Check the KIPCUG Planner on page 13 or the

KIPCUG Special Interest Group Directory on page 14.

# Microsoft Streets and Trips 2006 with GPS

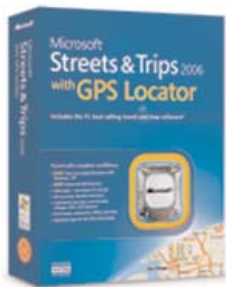
By Ira Wilsker, APCUG Director



I recently completed a 600 mile car trip. On this trip I used a software and hardware package that I recently purchased,

Microsoft Streets and Trips 2006 with GPS. Previously on long car trips I used my trusty and reliable, though now obsolescent Garmin Emap, a pocket sized mapping GPS complete with integral base highway maps, and upgraded with additional memory allowing for the upload of local street maps for several regions. For comparison purposes, on this current trip, I used both products literally side by side.

Microsoft Streets and Trips 2006 with GPS (street price \$75 to \$130)



is readily available at almost all local computer stores, most other stores that sell PC software, and online. It comes in a blue

box, with the Microsoft labeled GPS device prominently on display in a plastic bubble on the cover of the box. A nearly identical box with Microsoft Streets and Trips 2006, containing just the software, but without the GPS device, is also available at a lower price, and would be useful to those that already own a PC compatible GPS device, such as my Emap. The GPS device that comes with the full version is a small (about 2 by 2 inches

by ½ inch thick) USB powered device (no external power or batteries required), with a long cable that plugs into the USB port on a notebook computer, or a compatibly equipped Pocket PC. The Microsoft labeled GPS is actually a Pharos model 360 GPS receiver which is compatible with, and can be used with most other mapping and trip routing software.

After easily installing the Microsoft Streets and Trips 2006 software on my notebook computer, I went online looking for updates, since almost all competitive mapping software offers free periodic updates. Not surprisingly, there was a very recent update available for free download, which included highway construction updates. As a matter of practice, it would be a good idea, regardless which mapping program is used, to check the manufacturer's website for updates prior to any trip planning and mapping utilization.

I tried out the software by selecting my home address as a starting point, and the hotel we typically stay at near my kids' residences in north Texas. The mapping software created a reasonable route mostly utilizing interstate and other major highways. While the route determined by the software was very reasonable, and would have been adequate for someone who was making this trip for the first time, it was not our preferred route as we prefer taking several back roads, well off the beaten path, as a matter of choice, as well as saving a few miles. To plot the trip on my preferred back roads, I selected several intermediate points at major intersections, the last

intermediate point being where we prefer to get on I-45. I then clicked on the "Optimize Route" and in a matter of seconds a detailed routing was created precisely on our preferred path. This entire operation was completed in less than five minutes the first time I tried the software, and with my being ignorant of the instructions given in the user manual.

As we left home, with my wife driving for safety so I could play with my new toys, I powered up my notebook computer (plugged into the 12v outlet for power), and placed the GPS unit on the front of the dash, fastened by its attached suction cup. Directly adjacent to the Microsoft GPS I placed my trusty Garmin Emap, with the identical route programmed into it with its (Garmin MapSource) native software.

One immediate advantage I found with the mapping software being on my notebook computer, compared to the hand-held Emap, was the large computer screen was much more readable than the small screen on the Emap. The voice synthesis software on the Microsoft software (several male and female voices are selectable) announced as we were approaching the turns on our local streets on the way to the highway. The intelligence behind the voice synthesis is very good, as indicated when we detoured slightly from our selected route. When we turned into the parking lot of a fast food restaurant, the voice dutifully told us that we were not on our chosen route! I initially selected to have the left margin of my window show the speed, compass direction, altitude,

# Microsoft Streets and Trips (cont.)

and location, and the remainder of the screen show the route map, but this information can also be displayed in a small moveable window if a full-screen map display is selected. The route map is easily zoomable to any scale from world wide, down to a minimal 1 mile map, where each inch on the screen is about 100 yards. The scale is easily selectable by slider on the top-center of the page. I found that while on the highway, a selected scale of about nine miles or one inch on the screen equal to about three-quarters of a mile was optimal in terms of showing surrounding street details, as well as highway mile markers and exit numbers. On local streets, I preferred the two mile scale (one inch equals 300 yards), which easily showed the direction of one-way streets, as well as restaurants and lodging facilities by name. The actual scale is selectable and variable by personal preference.

While driving down the highway, I started to notice some slight differences between the display on my Emap, and the Microsoft system on my notebook computer. First was a nearly meaningless difference in that the Emap gave the speed down to the tenth of a mile an hour, while Microsoft Streets and Trips rounded off to the nearest MPH. Especially with increased police enforcement of speed limits, and the inherent inaccuracies of a typical auto speedometer, it is nice to have an accurate indicator of real speed. Another difference was one of GPS accuracy and satellite acquisition; the Emap typically acquired (detected) one or two more GPS satellites than did the Microsoft/Pharos GPS hardware. The Emap typically

showed six to nine satellites acquired, while the Microsoft/Pharos unit showed five to seven acquired. The accuracy difference was that the Emap was typically accurate within about 15 feet, while the Microsoft/Pharos unit averaged about 75 foot accuracy, the difference being both in location, and in altitude. It should also be noted that the Emap is a much more expensive device than the Pharos 360. In reality and for travel purposes, this difference was insignificant because if you could get within 75 feet of a McDonalds, a major intersection, or your chosen hotel, you would likely discern the point using your integral Mark I eyeball.

The Microsoft road maps themselves were generally very accurate and highly detailed, down to showing local rural dirt roads that were sometimes no more than a path through the brush or woods. One minor problem with the Microsoft maps were the location of many of the "Nearby Places" as Microsoft chooses to call them, which includes airports, amusement parks, restaurants, auto repair, ATMs, hotels, and other points of interest, is that their locations are not always precisely accurate as displayed on the map. While close, these minor discrepancies may be an irritant, such as a McDonalds being shown on the southeast corner of a major intersection, while it was in reality on the southwest corner (US 59 and Hwy 190 in Livingston, Texas is one of many examples). Another potential source of confusion is the spelling of some road names, such as "Dowlen" road is spelled "Dowlin". Still, the map would get the user to the destination where the place can

be easily seen and reached. By clicking on a place of interest, providing the scale of the map is large enough to encompass both the current location and the place of interest, the selected point will be shown on the map including its name, address, zip, and phone. If the GPS is turned off, the map will simply shift centering on the chosen location. The maps themselves can be viewed in several different contexts, including a terrain map, standard road map, political map (showing political boundaries), and a night-time road map where the screen is black with the roads and places appearing in a soft and non-blinding fluorescent green.

One warning is that the computer needs to be safely fastened such that it is not a threat to anyone in the car, and should definitely not be used if it is a distraction to the driver. The way I used it, with me navigating as my wife drove, was a reasonable accommodation.

Despite some minor issues, I found the Microsoft Streets and Trips 2006 with GPS a reasonably accurate, reasonably priced, and reliable travel tool.

*Editor's Note: Ira Wilsker is a Columnist for The Examiner, Beaumont TX and a Radio Show Host.*

# Accessing Family Accounts in Cases of Emergency

By Gabriel Goldberg, APCUG Advisor; Columnist, AARP Computer & Technology Website, [www.aarp.org](http://www.aarp.org)



We know it's important to maintain current wills, powers of attorney, medical directives, and other such documents. With much data now stored electronically, emergency preparedness includes planning for family members, trusted friends, and advisors to access personal information stored online, on computers, and in electronic gadgets.

## Access Family Accounts in Emergencies

It's clear how important it is for each of us to maintain current wills, powers of attorney, medical directives, and other such documents. And family members, trusted friends, and advisors such as lawyers need quick access to them. In their absence, at stressful times, important actions and decisions become needlessly difficult.

With much data now stored electronically, emergency preparedness requires that loved ones or advisors can access personal information stored online, on computers, and in electronic gadgets like cell phones and PDAs (personal digital assistants, Palms and Pocket PCs). This preparation merely adds our electronic lives to a readiness checklist. It's no more exotic or worrisome than opening joint bank accounts or giving a house key to a trusted neighbor.

Actions we should take are as unique as our legal, medical, and financial profiles. Preparation is especially important because laws and business practices don't match today's technologies.

News stories highlight some of today's challenges and risks. A soldier in Iraq used e-mail and a Web site to communicate with the world. When he was killed, his parents wanted to preserve what he had created. But his ISP refused to allow access or provide the data, citing privacy concerns. Similarly, when a Texas man's wife died, he cancelled her cell phone. The company also disconnected his phone, which had been on the same account. He couldn't reactivate it, leaving him isolated at a difficult time.

Where to begin? Many such legal and logistical problems can be avoided by simply including two names on accounts such as online banking and investing, mortgage service, bill paying, e-mail, and Web services. This way either person can deal with accounts on the other's behalf. But ensure that both names aren't required for routine actions.

Then record account names, passwords, and Web addresses for family members, trusted friends, or a lawyer, accountant, or executor. They needn't have the list until it's to be used so just ensure that they can find it and that it's kept updated.

Those of us in the baby boomer "sandwich generation" may have parents and children to look out for and with whom to share our technology preparation information. Preparation requires replacing the common mindset of independence

with one of readiness and collaboration. An estate attorney can be a valuable resource, providing legal documents, objective advice, and what-if scenarios.

Commercial services are arising to help. Denver-based Family Matters USA [[www.familymatters.com](http://www.familymatters.com)] claims to have "identified, researched and solved over 120 tasks that an estate executor or family could perform". They believe that while privacy issues affect all sorts of accounts, proper legal forms, a legitimate need, and perseverance (sometimes escalating to a supervisor) will yield the desired information.

While organizations typically handle employees' work information during emergency situations, supervisors and individuals should inventory what they use on the job and how others might need to access it.

At home or at work, the largest obstacle to emergency preparation is the wealth of information we use from memory. You can start an inventory by noting details of online accounts, Web site bookmarks saved, and passwords stored. Then make a list to share with someone who may need to follow in your electronic footsteps. Remember to safeguard your list, whether it's on paper, a PC, or a USB drive [[www.aarp.org/learntech/computers/hardware/secure\\_usb\\_drives.html](http://www.aarp.org/learntech/computers/hardware/secure_usb_drives.html)]. But don't hide the list itself behind a secret password!

Finally, there's a very tangible step to take. Emergency responders encourage using a high-tech replacement for traditional wallet

Continued on Page 23

# Organizing the Favorites Menu

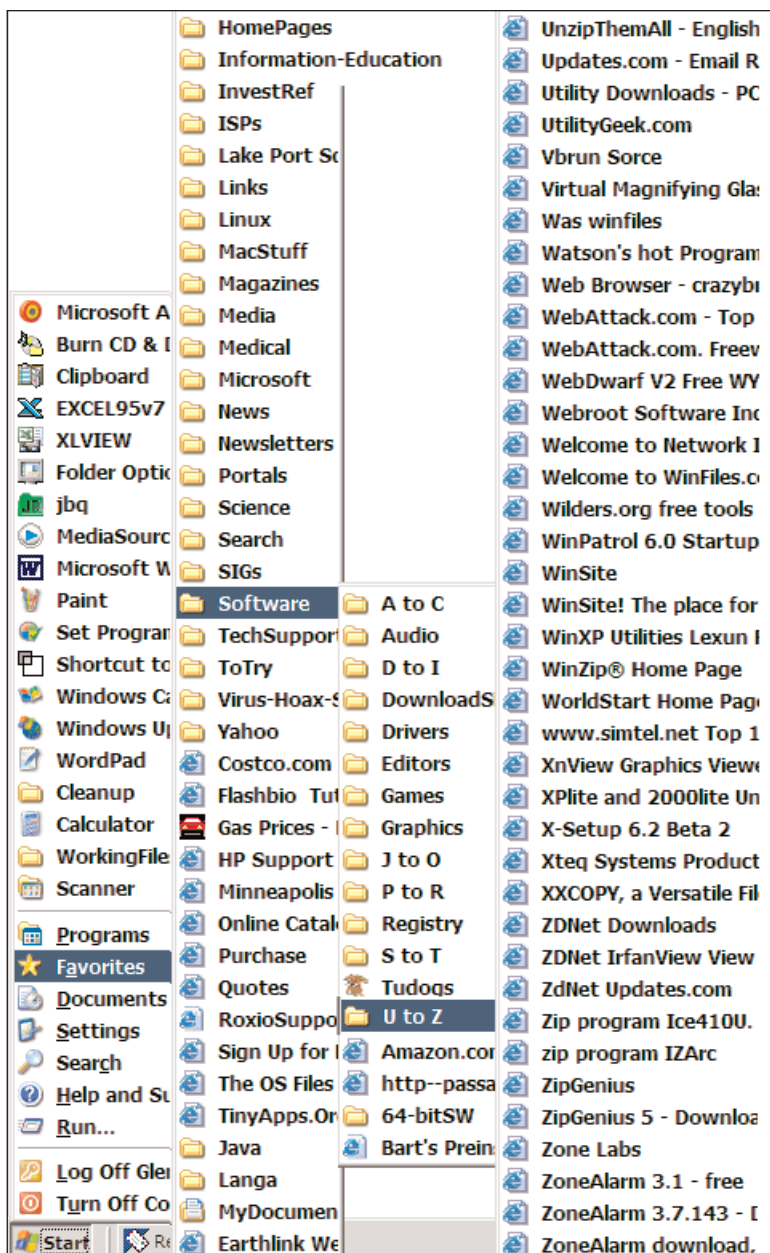
By Glenn Richards, Emeritus Member of the Lake-Sumter Computer Society, Leesburg, FL [www.lscs.us](http://www.lscs.us)

This is a follow-up on a tip from Worldstart. I have been using the method for years. When you collect shortcuts to web sites like I do, the Favorites menu gets difficult to manage without some organizing.

It is easy to add sub-folders to the

Favorites main folder, either via the Internet Explorer menu item Favorites, or using Windows Explorer.

The figure shows a main Favorites subfolder I named "Software." Under that folder I have a subfolder named "A to C," etc. down to "U to Z." The right-most column shows some of the contents of the UtoZ subfolder.



I split the alphabetic range of the subfolders so that the height of the contents of any folder does not exceed the vertical space on the Desktop. The figure has squeezed the display horizontally to make more room for these words.

My Software folder is for web sites where I have found worthwhile programs for download. One of its subfolders is "Tudogs," a web site that has shortcuts to hundreds of free programs. I have acquired many of them for the group's CDs.

The method of creating the subfolders using Windows Explorer that I use is to have WE in a two-pane mode with the Favorites folder highlighted in the left pane. Right-click in the right pane, New, Folder, and give the folder a name of your choosing. This method can be cascaded as far as you want to go.

The above method of organization can also be used to consolidate items in your Start, Programs menu. Use WE to open your Programs folder at C:\Documents and Settings\\Start Menu\Programs, create subfolders for categories of menu items, and move appropriate shortcuts to this new subfolder. This can reduce the height of the Programs menu so it will fit on the screen.

My Favorites folder has 1968 files (web addresses) in 136 subfolders occupying 403KB, with no web address more than two clicks away.

*Editor's Note: Glenn Richards's email is [grich32@yahoo.com](mailto:grich32@yahoo.com). This article is distributed by the APGUG Editorial Committee.*

# Directory of KIPCUG Leaders

Name	Position	Home	Work	Email Address
Bill Buzan	President	639-7647		president@kipcug.org
John Henderson	Vice-President		812-945-1102	vp@kipcug.org
Winnie Miller	Secretary	895-5360		winnie.miller@worldnet.att.net
Rosemary Viele	Treasurer	452-6878		treasurer@kipcug.org
Judy Lococo	Program Director			judyl@thorobred.win.net
Tom Denning	Membership Director	550-6106		membership@kipcug.org
Tom McArdle	Volunteer Director	458-7269		geezer@insightbb.com
Charley May	SIG Director	773-7155		sig@kipcug.org
Vacant	Publicity Director			
Mike Shaikun	Legal Advisor	425-3326	587-3540	
Joe Rothstein	Review Editor (Acting)			
Robbie Gibson	Director		367-6631	robbie@hostaroo.com
Scott Horan	Director		625-0170	shoran@greaterlouisville.com
Roger Klingeman	Director	245-9518		roger@klingeman.win.net
Brian Miller	Director	749-5892		brian@hostaroo.com
Susan Moore	Director	499-5222		mooresk@win.net, editor@kipcug.org
Wayne Perkey	Director	303-7377		wayne@perkeycomputing.com
Beverly Setree	Director		452-9851	beverly@advanced-grinding.com
Doc Viele	Director	452-6878		aqviele@win.net
Alan Birch	SIG Leader	429-0506		ajbirch@bellsouth.net
Jim Boneck	SIG Leader	812-258-0456	318-2079	jboneck@yahoo.com
Martin Champion	SIG Leader	810-9125		mccampion@aol.com
Grant McCormick	SIG Leader	935-2497		gmccormick@win.net (Preferred)
Bob Rose	SIG Leader	241-1604		britdude@techemail.com
Tom Scanlan	SIG Leader	502-477-1639	477-1639	tpscan@iglou.com
Myron Smith	SIG Leader	897-7718		mjslks@insightbb.com
Jim Travelstead	SIG Leader	375-4796	852-4761	jim.travelstead@louisville.edu

## For Your Information

**Changes for mailing address, email address or telephone numbers** should be sent to Tom Denning, Director of Membership. You can send the change to the KIPCUG mailing address printed on the back of this Magazine or by email to [membership@kipcug.org](mailto:membership@kipcug.org). The KIPCUG Membership Renewal Link is on the web page at [www.kipcug.org](http://www.kipcug.org) in the "For Your Information" section or you can access it directly at <http://www.kipcug.org/payment.htm>.

# July 2006 KIPUCG Planner

Sunday	Monday	Tuesday	Wednesday	Thursday	Friday	Saturday																																																																													
		<table border="1" style="font-size: small; margin: auto;"> <tr><td>S</td><td>M</td><td>T</td><td>W</td><td>T</td><td>F</td><td>S</td></tr> <tr><td>4</td><td>5</td><td>6</td><td>7</td><td>8</td><td>9</td><td>10</td></tr> <tr><td>11</td><td>12</td><td>13</td><td>14</td><td>15</td><td>16</td><td>17</td></tr> <tr><td>18</td><td>19</td><td>20</td><td>21</td><td>22</td><td>23</td><td>24</td></tr> <tr><td>25</td><td>26</td><td>27</td><td>28</td><td>29</td><td>30</td><td></td></tr> </table>	S	M	T	W	T	F	S	4	5	6	7	8	9	10	11	12	13	14	15	16	17	18	19	20	21	22	23	24	25	26	27	28	29	30		<table border="1" style="font-size: small; margin: auto;"> <tr><td>S</td><td>M</td><td>T</td><td>W</td><td>T</td><td>F</td><td>S</td></tr> <tr><td>1</td><td>2</td><td>3</td><td>4</td><td>5</td><td>6</td><td>7</td></tr> <tr><td>8</td><td>9</td><td>10</td><td>11</td><td>12</td><td>13</td><td>14</td></tr> <tr><td>15</td><td>16</td><td>17</td><td>18</td><td>19</td><td>20</td><td>21</td></tr> <tr><td>22</td><td>23</td><td>24</td><td>25</td><td>26</td><td>27</td><td>28</td></tr> <tr><td>29</td><td>30</td><td>31</td><td></td><td></td><td></td><td></td></tr> </table>	S	M	T	W	T	F	S	1	2	3	4	5	6	7	8	9	10	11	12	13	14	15	16	17	18	19	20	21	22	23	24	25	26	27	28	29	30	31							<b>1</b>
S	M	T	W	T	F	S																																																																													
4	5	6	7	8	9	10																																																																													
11	12	13	14	15	16	17																																																																													
18	19	20	21	22	23	24																																																																													
25	26	27	28	29	30																																																																														
S	M	T	W	T	F	S																																																																													
1	2	3	4	5	6	7																																																																													
8	9	10	11	12	13	14																																																																													
15	16	17	18	19	20	21																																																																													
22	23	24	25	26	27	28																																																																													
29	30	31																																																																																	
<b>2</b>	<b>3</b> Hardware SIG	<b>4</b>	<b>5</b>	<b>6</b> Visual Basic SIG	<b>7</b>	<b>8</b> Basic Access SIG 10:00																																																																													
<b>9</b>	<b>10</b> Excel Basic SIG	<b>11</b> General Meeting Rescheduled	<b>12</b> Board of Directors	<b>13</b> Genealogy II SIG Investing SIG	<b>14</b> Windows OS SIG	<b>15</b>																																																																													
<b>16</b>	<b>17</b> New Users Daytime SIG Genealogy SIG	<b>18</b> Real Estate SIG	<b>19</b>	<b>20</b> New Users South SIG Webmasters SIG	<b>21</b> Advanced Users SIG	<b>22</b> Hands On																																																																													
<b>23</b>	<b>24</b> Intermediate Users SIG	<b>25</b> Technical Market Analysis SIG Digital Photography	<b>26</b>	<b>27</b> Utilities SIG	<b>28</b>	<b>29</b>																																																																													
<b>30</b>	<b>31</b>	<p><b>All Monday-Friday Meetings are at 6:30 PM.</b></p> <p><b>All Afternoon Meetings are at 2:00 PM.</b></p>																																																																																	

# KIPCUG Special Interest Group Directory

**ACCESS BASIC SIG** - Meets at a date and location to be announced. Contact SIG LEADER Alan Birch at [ajbirch@bellsouth.net](mailto:ajbirch@bellsouth.net) or 429-0506

**ADVANCED USERS SIG** - Meets 6:30 PM on the 3rd Friday of the month at CCUM at 4614 Brownsboro Road (US 42 & Blankenbaker Lane) in the Computer Lab (Room 222). Contact SIG LEADER Tom Scanlan at 1-502-477-1639 or [tpscan@iglou.com](mailto:tpscan@iglou.com)

**COMMUNITY OUTREACH SIG** - Meets on the 4th Friday of specified months at Advanced Grinding and Machine Inc, 4644 Illinois Avenue. Contact TEAM MEMBER Beverly Setree at 452-9851 or [beverly@advanced-grinding.com](mailto:beverly@advanced-grinding.com)

**DIGITAL PHOTOGRAPHY SIG** - Meets 6:30 PM on the 4th Tuesday of the month at the LFPL-Bon Air Regional, 2816 Del Rio Place. Contact SIG DIRECTOR Charley May at [sig@win.net](mailto:sig@win.net) or 773-7155

**EXCEL BASIC SIG - Restarting** - Meets 6:30 PM on the 2nd Monday of the month at CCUM at 4614 Brownsboro Road (US 42 & Blankenbaker Lane) in the Computer Lab (Room 222). Contact SIG LEADER Jim Boneck at [jboneck@yahoo.com](mailto:jboneck@yahoo.com)

**GENEALOGY SIG** - Meets 6:30 PM on the 3rd Monday of the month at the LFPL-Eline Branch at St. Matthews City Hall Building at the corner of Grandview Ave. and Fairfax Ave. about 3 blocks south of Shelbyville Rd. Contact SIG LEADER Susan Moore at 499-5222 or [mooresk@win.net](mailto:mooresk@win.net) [www.genealogy-family.com](http://www.genealogy-family.com)

**GENEALOGY II SIG** - Meets 6:30 PM on the 2nd Thursday of the month at the LFPL-Jeffersontown Branch, 10635 Watterson Trail. Contact SIG LEADER Susan Moore at 499-5222 or [mooresk@win.net](mailto:mooresk@win.net)

**HANDS ON SIG** - Meets 2:00 PM the 4th Saturday of the month at the LFPL-Eline Branch at St. Matthews City Hall Building at the corner of Grandview Ave. & Fairfax Ave. 3 blocks south of Shelbyville Rd. Contact Co-SIG LEADERS Charley May at [sig@win.net](mailto:sig@win.net) or Grant McCormick at [gmccormick@win.net](mailto:gmccormick@win.net) or Tom McArdle at [usersig@insightbb.com](mailto:usersig@insightbb.com)

**HARDWARE SIG** - Meets 6:30 PM the 1st Monday of the month at the LFPL-Eline Branch at St. Matthews City Hall Building, the corner of Grandview Ave./Fairfax Ave. 3 blocks south of Shelbyville Rd. Contact Co-SIG LEADERS Grant McCormick at [gmccormick@win.net](mailto:gmccormick@win.net) or Charley May at [sig@win.net](mailto:sig@win.net) or 773-7155

**INTERMEDIATE USERS SIG** - Meets 6:30 PM on the 4th Monday of the month at CCUM at 4614 Brownsboro Road (US 42 & Blankenbaker Lane) in the Computer Lab (Room 222). Contact SIG LEADER Jim Travelstead at [jim.travelstead@louisville.edu](mailto:jim.travelstead@louisville.edu) or 852-4761(W), 375-4796(H)

**INVESTING SIG** - Meets 6:30 PM the 2nd Thursday of the month at the Louisville Aero Club, Bowman Field. Contact SIG LEADER Doc Viele at 452-6878

**NEW USERS DAYTIME SIG** - Meets 2:00 PM on the 3rd Monday of the month at CCUM at 4614 Brownsboro Road (US 42 & Blankenbaker Lane) in the Computer Lab (Room 222). Contact SIG LEADER Winnie Miller at [winnie.miller@att.net](mailto:winnie.miller@att.net)

**NEW USERS SIG SOUTH - NEW - New Date** - Meets 6:30 PM on the 3rd Thursday of the month at Resurrection Episcopal Church at 4100 Southern Parkway in the Computer Lab. Contact SIG LEADER Charley May at [sig@win.net](mailto:sig@win.net) or 773-7155

**REAL ESTATE SIG** - Meets 6:30 PM on the 3rd Tuesday of the month at CCUM at 4614 Brownsboro Road (US 42 & Blankenbaker Lane) in the Computer Lab (Room 222). Contact SIG LEADER Bill Buzan at [re\\_sig@insightbb.com](mailto:re_sig@insightbb.com) or 639-7647

**TECHNICAL MARKET ANALYSIS SIG** - Meets 6:30 PM on the 4th Tuesday of the month at Louisville Free Public Library, Crescent Hill Branch, 2752 Frankfort Avenue in the lower level meeting room. Contact SIG LEADER Myron Smith at 897-7718 or [mjslks@insightbb.com](mailto:mjslks@insightbb.com)

**UTILITIES SIG** - Meets 6:30 PM on the 4th Thursday of the month at CCUM at 4614 Brownsboro Road (US 42 & Blankenbaker Lane) in the Computer Lab (Room 222). Contact Co-SIG LEADERS Tom McArdle at [usersig@insightbb.com](mailto:usersig@insightbb.com) or Charley May at [sig@win.net](mailto:sig@win.net) or 773-7155

**VISUAL BASIC SIG** - Meets 6:30 PM on the 1st Thursday of the month at the LFPL-Bon Air Regional, 2816 Del Rio Place. Contact SIG LEADER Martin Campion 810-9125 or [mccampion@aol.com](mailto:mccampion@aol.com)

**WEBMASTERS SIG** - Meets on the 3rd Thursday of the month at 6:30 PM at Win.Net located at 1048 Chestnut St. Contact SIG LEADER John Henderson at [jh@inetmarketing.com](mailto:jh@inetmarketing.com) or 812-945-1102

**WINDOWS OS SIG** - Meets on the 2nd Friday of the month at 6:30 PM at CCUM at 4614 Brownsboro Road (US 42 & Blankenbaker Lane) in the Computer Lab (Room 222). Contact SIG LEADER Bob Rose at [britdude@techemail.com](mailto:britdude@techemail.com) or 241-1604

# The SIG Scene

By Charley May, KIPCUG

**Where to find the scoop on  
your Special Interest Group**

## **HEADLINE NEWS**

As I mentioned in last months HEADLINE NEWS and in my December Fireside Chat at the December General Meeting, indicators are showing that the computer industry is now starting into the middle of the next economic turnaround or upturn, which will be good for KIPCUG. But the results have not come quickly enough to prevent cutbacks (temporary, I hope) in KIPCUG's operational cost. These cutbacks in operational cost you will see explained in other parts of the Computer User News.

The important point here is that the KIPCUG SIGs are going to have to share in these cutbacks. With a smaller Computer User News, the SIGs will have less space to advertise and promote the SIGs to non-member readers of the Computer User News (which brings nonmembers to visit KIPCUG SIGs, some of which become members). The SIG Scene is also the mouthpiece of each of the SIGs, which tells SIG attendees what is going to happen next month and what they missed if they could not make a meeting, including any changes that might be happening, and important functions of the SIG Scene.

We are going to do our part in this operational cost reduction by cutting back on our SIG promotional efforts by getting by with fewer pages in a smaller edition of the

Computer User News (Lite) until we can increase KIPCUG's income level and resume our normal operations. One of the things that KIPCUG Members can do to help end this operational cost short fall is to help us and yourself by bringing KIPCUG more new members.

KIPCUG SIGs can help you bring in new members! You have friends, neighbors, and business associates that use computers. With the latest changes in using computers, many of them are experiencing new problems regarding ad ware, malware, viruses, compatibility problems and upgrading difficulties. Instead of using your time and efforts to help them, urge them to join KIPCUG and attend a SIG or bring them to a SIG that can help them with their problem. We can fix their computer or show them how to fix their computer and a KIPCUG membership costs much less than a trip to the repair shop and you will have helped KIPCUG by adding a new member to share the financial load of operating our group.

Stepping off soapbox!

Well, the word is finally getting out about the KIPCUG HANDS ON SIG. In June, we had 6 machines in for fixes, upgrades and protection additions, with happy KIPCUG Members that got together for an enjoyable PIG SIG after everything was done. If you have a problem that needs a fix or an upgrade that needs doing and you want to learn how it is done rather than dumping it off at the shop, come see us at the HANDS ON SIG and have some fun while learning more about your computer.

NOTICE: The NEW USERS

SOUTH SIG has moved their meeting day to the third Thursday at 6:30 PM at the Computer Lab in Resurrection Episcopal Church. Send or bring a new computer user to this SIG and get them started with KIPCUG SIGs.

KIPCUG SIGs are still looking for NEW meeting places. Please keep your eyes and ears open for new SIG meeting locations and report suggestions to KIPCUG SIG DIRECTOR Charley May; sig@win.net or 773-7155. Locations should hold 12-24 persons with Internet connections and, if possible, computers, a white board and a projector for the attendees would be pluses.

---

## **ACCESS BASIC SIG**

---

The next meeting for the ACCESS BASIC SIG is July 8 at 10:00 AM. We will meet at Java Brewing. That is in the point where River Road joins US42 in Prospect. That is 4.8 miles on the left, east on US42 from the Watterson or 1.6 miles from the Gene Snyder.

The ACCESS BASIC SIG uses the tools that are available in Access without programming. Users bring problems and we come up with solutions.

If you have topics that you would like discussed, please contact SIG LEADER Alan Birch at ajbirch@bellsouth.net or 429-0506. If you have some tips and tricks to share, we would love to hear them. We meet on the second Saturday of the month from 10:00 AM to Noon at Java Brewing.

# The SIG Scene (cont.)

## **ADVANCED USERS SIG**

The July 21 meeting at 6:30 PM will be in the Computer Lab, Room 222, at CCUM. We will discuss how spyware scanners work and look at some variations on antivirus tools, possibly some beta software. We will also continue to discuss finding and rooting out malware with using tools, observation and cunning. We'll try to combine that with our continuing discussion about wireless networks and simple security.

The June meeting touched on malware that overwrites common antivirus tools, and how they have evolved to become self-healing. I focused on finding and rooting out malware, using tools, observation and cunning. We had some wireless equipment available for a demonstration of how wireless networks and simple security combine.

Windows XP supports enhancements like remote access, network printing and wireless networking. Join us with your laptop as we establish a local network and experiment with XP's network features. We'll also discuss any hot security issues during our Q&A period as our SIG LEADER updates us on IT news, and discuss questions the group might bring up. If we're lucky, we might see a new VISTA in the near future.

Please check out the KIPCUG web site to read details of past and future meeting topics, new announcements and Q&A threads. Visit [www.KIPCUG.org](http://www.KIPCUG.org) and click

the Forum tab to see the Advanced Users section.

The ADVANCED USERS SIG explores software and hardware topics of interest to people who are very comfortable with their computer who want to know even more. We encourage everyone to share their experiences so we can all learn and grow into areas we would not normally explore on our own.

We meet in the Computer Lab, Room 222, at Christ Church United Methodist (CCUM) at 6:30 PM on the third Friday of the month. Add yourself to our email alert list by self-registering at [groups.yahoo.com/group/KIPCUGAdvUsers](http://groups.yahoo.com/group/KIPCUGAdvUsers) or contact Tom at [tpscan@iglou.com](mailto:tpscan@iglou.com). Please use ADVANCED USERS SIG as the email subject line.

## **COMMUNITY OUTREACH SIG**

The next SIG meeting will be on July 28 at 6:30 PM at Advanced Grinding and Machine, Inc, 4644 Illinois Ave. in Louisville. We will continue in 2006 on our bi-monthly meeting schedule. At the May 26 meeting, we planned to complete any computer installs that are left and prepare them to be given out. We will also continue to evaluate locations that have been suggested to receive computers.

We are still accepting donations. The COMMUNITY OUTREACH SIG has been designed to take donations of computer equipment and restore them to working condi-

tion. These computers can then be distributed to people in need. We are always looking for donations. Even if you think there is no value in your old computer, contact us and let us take it off your hands. We also welcome people willing to help restore computers for distribution.

This SIG has provided PCs to disadvantaged residents of the area and will continue to provide a valuable service to the community. Your participation is greatly appreciated.

The COMMUNITY OUTREACH SIG meets at Advanced Grinding and Machine, Inc, 4644 Illinois Ave. in Louisville at 6:30 PM on the fourth Friday of odd-numbered months except November. To be added to the SIG's advance mailing list, contact TEAM MEMBER Beverly Setree, [beverly@advanced-grinding.com](mailto:beverly@advanced-grinding.com). Place the words COMMUNITY OUTREACH SIG in the subject line of your email.

## **DIGITAL PHOTOGRAPHY SIG**

The next scheduled meeting of the DIGITAL PHOTOGRAPHY SIG will be Tuesday, July 25, at 6:30 PM at the LFPL Bon Air Branch Library. At the meeting, we will continue looking at the camera equipment we already own or hope to possibly purchase in the future, and continue to see how pictures we have taken or wish to take can be optimized first in the camera and then by the computer. Software will

# The SIG Scene (cont.)

be discussed including continuing examples by Matt Chojnowski using the free program The GIMP.

Any questions on your new cameras, software or printers will also be welcome. Bring those nagging questions, pictures on which you need help (on disk), cameras (with the user manuals), and if you have special software be certain to bring it also.

The specific purpose of this SIG is to examine the software and hardware topics that will make your photographic efforts more fun and rewarding. Members at any level of experience and owners of any type of digital camera are welcome. Again, please be certain to bring your camera, manual and photo CD and we will all increase our ability to understand how digital photography is different from using film.

The DIGITAL PHOTOGRAPHY SIG meets monthly at 6:30 PM on the fourth Tuesday at the LFPL Bon Air Branch Library. Contact Bill Edwards by email at [bedwardsna@sbcglobal.net](mailto:bedwardsna@sbcglobal.net) to get advance notice of this SIG. Be certain to put DIGITAL PHOTOGRAPHY in the subject line so that it is not destroyed as SPAM.

---

## **EXCEL BASIC SIG**

---

At the 6:30 PM, July 10 meeting in the Computer Lab, Room 222, at CCUM, we will address sub-totaling and the table functions.

The pace of this SIG will be set by the members attending. Each ses-

sion will start with member questions about home or work projects or last month's material. Feel free to bring in your data or existing spreadsheet. Next is the presentation of new material, followed by the opportunity to practice this material.

At last month's meeting, we examined another member's spreadsheets, adding a graph and some more calculations and even had time to review some built-in statistical functions.

The computer lab has computers for your use, but some people bring their laptops so they can practice and ask questions about their particular situation.

The EXCEL BASIC SIG meets at 6:30 PM the second Monday of the month in the CCUM Computer Lab, Room 222. To be put on the email list or if you want to send a question, email Jim Boneck at [jboneck@yahoo.com](mailto:jboneck@yahoo.com) and put EXCEL BASIC SIG in the subject line. Feel free to call him at work 318-2079 or at home 258-0456.

---

## **GENEALOGY SIG**

---

The next GENEALOGY SIG Meeting will be at 6:30 PM on July 17 at the LFPL Eline Branch. The presentation topic will be linking your research log entries to your sources and repositories, not just individuals, to make your research more efficient.

Presentation topics for future meetings will include: Sources -

Examples of Bibliography and End Notes, and Sources - Personal Knowledge.

The last meeting in June was on creating a web site with the help of The Master Genealogist. We explained how to create a web site, or just how to send your data to some of your relatives. This makes it very easy to add some interactivity to the information provided to your relatives.

TMG version 6.08 is the most current version available. Be sure to update your program with the free download, if you have not already downloaded it. Now is the time to jump in so that you get all of the tips and tricks. Since we have had new users join us in the last few months, you will not be alone if you are new to The Master Genealogist.

The GENEALOGY SIG meets at the LFPL Eline Branch at 6:30 PM on the third Monday each month. SIG LEADER Susan Moore and all of the SIG's attendees are looking for you to join us at a future meeting. If you have any particular questions before the next meeting, or if you have a topic that you would like to see presented, please email SIG LEADER Susan Moore at [mooresk@win.net](mailto:mooresk@win.net). If you want a map or directions on how to get to the GENEALOGY SIG, go to [www.genealogy-family.com](http://www.genealogy-family.com).

---

## **GENEALOGY II SIG**

---

The GENEALOGY II SIG will have its next meeting on July 13 at 6:30 PM at the Louisville Free

# The SIG Scene (cont.)

Public Library Jeffersontown Branch. Bring your laptop for a critique of your data entry techniques, time permitting.

The SIG had its last meeting on June 8.

This SIG is going to be an informal Q&A session without any handouts. Topics are not announced ahead of time because the participants will determine the content of the meeting. Short subjects may be presented from time to time when there are insufficient questions.

If you have any particular questions before the next meeting, please email SIG LEADER Susan Moore at mooresk@win.net. If you want a map or directions on how to get to the SIG, please go to [www.win.net/mooresk](http://www.win.net/mooresk) and click on the GENEALOGY II SIG. We meet at 6:30 PM on the second Thursday of each month at the Louisville Free Public Library Jeffersontown Branch.

## HANDS ON SIG

Our next meeting will be on July 22 at the Eline Branch of the LFPL in St. Matthews. We start at 2:00 PM and will work with you to get your machine back up and running at top speed. The group can also help you build/upgrade your own PC in just one weekend. It may not always be possible to work on every machine that is not expected, but we resolve most issues by the library closing time.

There is no fixed topic to discuss,

just a chance to find some assistance and learn more about your PC. You will need to bring your complete system, monitor, keyboard, mouse, cables and processor. Should you need help getting it up to the meeting room, members will assist you.

At the June meeting, we had a lot of work to do. Winnie Miller needed her laptop setup to work with her wireless configuration with the security settings needed to protect her from the vulnerabilities of wireless. John Ashe needed protection to go on the Web with his Windows 2000 laptop machine and needed a free OpenOffice Suite to handle and create his documents. We also put more memory in a laptop, a USB 2.0 card in a desktop machine and updated three other machines, a busy day. All of our work was done without losing any of the programs or data on the computers, to the delight of all of the computer owners.

If you are not comfortable going it alone, email us in advance and the group will be ready to help you, or help you help yourself. Gain confidence and improve your knowledge base in just a few hours. Members with repair experience are encouraged to drop in and help other members solve nagging problems. All levels of experience are welcomed and we will share our abilities with one another.

Our location has a high-speed web connection and driver updates and patches can be downloaded quickly. We meet on the fourth Saturday of the month at 2:00 PM in the second floor meeting room at the Eline Branch of the LFPL. We often run

well into the afternoon to assure your problems are resolved.

If you have a problem machine, contact the Co-SIG LEADERS listed below in advance of the next meeting so that time can be allocated to address your problems. For an advance notice of this SIG, please contact both Co-SIG LEADERS Charley May at [sig@win.net](mailto:sig@win.net) and Tom McArdle at [usersig@insightbb.com](mailto:usersig@insightbb.com). Please add the words HANDS ON SIG in the subject line of your email. Co-SIG LEADERS Charley May or Tom McArdle or TEAM MEMBER Brad Dudley and other knowledgeable KIPCUG Members will be there to help you with your problems.

## HARDWARE SIG

The SIG will meet on July 3 at 6:30 PM in the second floor meeting room of the Eline Branch of the LFPL in St. Matthews. Co-SIG LEADERS Charley May and Grant McCormick, will be covering Computer Security: protecting your hardware investment. An overview: WiFi security, firewalls (hardware and software), antivirus, spyware, surge protectors, un-interruptible power supplies and proper maintenance.

At the June meeting, we covered problems that attendees had with their wireless networking systems. Time was reserved for answering questions about member's problems at the end of the session.

# The SIG Scene (cont.)

Do you have a desire to expand the capabilities of your existing system? Do you want to be comfortable with adding your own hard drive, audio or video card, memory module, DVD burner or building your own computer from the ground up? Learn the tips and techniques necessary for a successful hardware upgrade.

Does your machine need help? Contact us so the Co-SIG LEADERS Charley May and Grant McCormick can be ready to assist you with your computer. Do not surprise the group. Let them know in advance that you are bringing your unit. With advance planning, you may not need to bring your complete system to the meeting.

Our regular meeting time is on the first Monday of the month at 6:30 PM in the second floor meeting room of the Eline Branch of the LFPL in St. Matthews. If you would like a reminder of the next meeting and its topic, send an email to Co-SIG LEADER Charley May at sig@win.net. Be sure to put **HARDWARE SIG** in the subject line of your message.

---

## **INTERMEDIATE USERS SIG**

---

The July 24 meeting will be in the Computer Lab, Room 222, at CCUM at 6:30 PM. This will be Part 2 on Microsoft Office 2007. At this meeting, we will go over new functionality in Access, Project, and Visio 2007.

The August 28 meeting will look over the beta for Vista, the next release of Windows. We'll do an upgrade of Windows XP to Vista then look at the features and working of this new Windows operating version.

At the June meeting, we viewed the next beta of Microsoft Office 2007. We looked at installation and then what's new with applications such as Word, Excel, PowerPoint.

The SIG focuses on the various versions of MS Windows software, its features, methods of operation, problems and all the hints and tips that Jim knows you will be interested in. Topics suggested at meetings usually become future meeting topics. This SIG is for users who are comfortable with the daily use of their computer and want to learn more. In other words, you have mastered your fear of computers and you are willing to push the envelope a little. We welcome discussion and a chance for everyone to learn.

If you have any questions or suggestions for meeting topics, bring them to the SIG or email Jim at jim.travelstead@louisville.edu or leave them at the INTERMEDIATE USERS SIG area in the KIPCUG forum and Jim will have your answer at the next SIG meeting or before.

Jim is updating his email list. Anyone interested in receiving an email about one week before the meeting should email him with "Add me to the KIPCUG INTERMEDIATE USERS SIG meeting email list" in the subject line. Anyone at the July meeting will be added to this list.

The INTERMEDIATE USERS SIG meets in the Computer Lab, Room 222, at CCUM at 6:30 PM monthly on the fourth Monday. CCUM is at 4614 Brownsboro Road (US 42) at the Blankenbaker Lane traffic light. Directions are on the CCUM web site at [www.ccum.net](http://www.ccum.net) and on the KIPCUG web site at [www.kipcug.org](http://www.kipcug.org).

---

## **INVESTING SIG**

---

SIG LEADER Doc Viele moderates the INVESTING SIG discussions, which have been ongoing since 1986. The next SIG meeting will be on July 13. Meetings consist of round table information exchanges on any economic subject of current interest. Questions and presentations are encouraged.

The next SIG meeting will include general information on investing and the usual information exchange. The INVESTING SIG meets the second Thursday of the month at the Louisville Aero Club at 6:30 PM. This is not an investment club; they DO NOT discuss mutual funds.

---

## **NEW USERS DAYTIME SIG**

---

July 17 from 2:00 to 4:00 in the Computer Lab, Room 222, at CCUM will be our next class. Join our NEW USERS DAYTIME SIG!

# The SIG Scene (cont.)

As always, we welcome the people new to computers. With practice, we hope to make you feel comfortable using the computer at home.

Remember, I bring some of the 599CD's in case you want to try out a program before you buy or practice some of the skills the group is not working on. Bring some ear-phones if you would like to do this as some of the computers do not have them.

Bring a small hard drive if you would like to learn how to write Documents and transfer the Documents to a small hard drive you can carry in your pocket or purse. Our new computers have a USB in the front of the computer. I will bring a couple in case you do not own one. If you have a CD that you want to learn how to open, we could practice on that.

We look forward to meeting and helping computer users, young or old, experienced or not. If you know of someone who is interested in learning a computer from scratch, let them know about our SIG.

The parking may be a little difficult as a fence is up on part of the lot.

We meet from 2:00 to 4:00 in the Computer Lab, Room 222, at CCUM on the third Monday of each month. CCUM is located at 4614 Brownsboro Road (US 42) at the Blankenbaker Lane traffic light. To be added to the email list, please send SIG LEADER Winnie Miller an email at [winnie.miller@att.net](mailto:winnie.miller@att.net).

---

## **NEW USERS SOUTH SIG**

---

The NEW USERS SOUTH SIG will start having its meeting on a new day of the month, July 20, at 6:30 PM at its new location, Resurrection Episcopal Church, 4100 Southern Parkway. This will allow us to use the KIPCUG projector in the Computer Lab. The Lab is on the first floor and you can enter from the back of the building. Look for the KIPCUG NUS SIG sign in the window. Please continue to bring your questions and topics of interest so that we can determine what you want to learn in the SIG.

Our third meeting started with a look at one of those "get your email anywhere programs" and progressed into how to set up a free email address for other uses. Our Q & A session covered some very interesting problems that attendees brought with them and ended with them taking home an understanding of how to solve their problems.

Our new location has 14 computers for new users to receive hands-on training while watching SIG LEADER Charley May's presentation on the screen at the front of the room. The training will be geared to the level of most of the attendees and others will be assisted by TEAM MEMBER Star Soledad to help them stay on track. We will start this meeting with more information on how to get started, with time allotted for your questions. Questions on a card or paper are eligible for a door prize drawing. Come visit with us and tell us what

you want to learn.

With the NEW USERS SOUTHWEST SIG shutdown for the present and the original NEW USERS SIG still searching for a new meeting location, we are very happy to have a meeting place half-way in-between. If you have any suggestions for an east side location that is stable, free and has computers for us to use, please contact SIG LEADER Charley May. Also, if you would like a reminder of the next meeting and its topic, send an email to Charley at [sig@win.net](mailto:sig@win.net). Be sure to put "NEW USERS SOUTH SIG" in the subject line of your message.

Remember the SIG has changed its meeting day to the third Thursday of each month from 6:30 PM to 8:30 PM. We meet in the first floor Computer Lab at Resurrection Episcopal Church, 4100 Southern Parkway.

---

## **REAL ESTATE SIG**

---

The REAL ESTATE SIG will meet July 18 at 6:30 PM in the Computer Lab, Room 222, at CCUM. The SIG will continue its discussion and analysis of Residential and Commercial Real Property. SIG LEADER Bill Buzan will monitor the group discussion and work toward a better understanding of the characteristics of various leases and how they are used. Future meetings will continue these discussions and expand into other areas of Real Estate and its importance.

# The SIG Scene (cont.)

The mission of this SIG is to provide property owners and investors the opportunity to gain a greater insight into the transaction, so that they can better protect their endeavors more effectively.

If you have any questions related to Real Estate, have any subjects that you would like to have a future meeting about or would like to be added to our mailing list, please send your request to Bill Buzan at [re\\_sig@insightbb.com](mailto:re_sig@insightbb.com). You can also contact Bill at 639-7647.

The REAL ESTATE SIG meets monthly on the third Tuesday in the Computer Lab, Room 222, at CCUM at 6:30 PM. CCUM is located at 4614 Brownsboro Road (US 42) at the Blankenbaker Lane traffic light. Directions are on the CCUM web site and are also on the KIPCUG web site at [www.kipcug.org](http://www.kipcug.org).

---

## **TECHNICAL MARKET ANALYSIS SIG**

---

On July 25 at 6:30 PM, we will meet at the Louisville Free Public Library, Crescent Hill Branch, 2752 Frankfort Ave. in the lower level meeting room. We will continue to examine the near and long term direction in which the market can be expected to move. We rely on the input of all attending to discuss their review of market indicators and explain the conclusions they have made. This format provides a quick hands-on understanding of the different tools available and which ones best fit your investment

strategy.

Additional information will be announced by email to all members on our list. With the late date of the SIG's meeting and potential market fluctuations, email is the best way to inform all of our discussion topics.

New attendees are encouraged to come to the meetings to learn about technical analysis and its application to the present market conditions. We generally discuss the present market, and use any web-based indicators available. Many times, we also have someone present topics of interest to anyone using technical analysis.

We are always looking for suggestions for topics of discussion, or suggested presentations by knowledgeable groups or individuals. Please send your ideas or requests to be added to the email distribution list to SIG LEADER Myron Smith at [mjslks@insightbb.com](mailto:mjslks@insightbb.com). Please include TMA SIG in the subject line. You can also contact Myron at 897-7718.

The TECHNICAL MARKET ANALYSIS SIG meets on the fourth Tuesday of each month, except December, at 6:30 PM at the Louisville Free Public Library, Crescent Hill Branch, 2752 Frankfort Ave. in the lower level meeting room.

---

## **UTILITIES SIG**

---

On July 27, Co-SIG LEADER Tom McArdle will introduce

'Linspire Live'. It is a complete Linux OS that doesn't interfere with Windows and runs directly from a CD. Learn more about this open source software. Is it for you or do you want to stay with Microsoft? Drop in and see what this desktop OS can do.

In June, Co-SIG LEADER Charley May reviewed a number of worthwhile utilities that are included in WINDOWS XP, but not many individuals use.

Examining a mix of freeware, shareware and retail programs, this SIG hopes to make your computer experience more enjoyable. Members may bring blank CD's to exchange for free and trial versions of featured utilities.

This SIG meets on the fourth Thursday of the month at 6:30 PM in the Computer Lab, Room 222, at CCUM. To be added to our advance notice list contact Co-SIG LEADERS Tom McArdle at [usersig@insightbb.com](mailto:usersig@insightbb.com) or Charley May at [sig@win.net](mailto:sig@win.net). Please add the words UTILITIES SIG in the subject line of your email.

---

## **VISUAL BASIC SIG**

---

Our next meeting will be held on Thursday, July 6, at 6:30 PM at the Bon Air Regional Branch of the LFPL. SIG LEADER Martin Campion will lead this session. Martin continues to bring updates to games he is developing and reviews the projects TEAM MEMBERS bring to the meeting. New

# The SIG Scene (cont.)

members will learn the power of this software and how a little investment in time can open a new world of computer opportunities.

Recent months have discussed pari-mutual handicapping programs and open discussion of Visual Basic and VBNet possibilities.

The VISUAL BASIC SIG meets monthly on the first Thursday at 6:30 PM at the Bon Air Regional Branch of the LFPL, 2816 Del Rio Place. To be added to the email list for a reminder of meetings and topics planned, contact SIG LEADER Martin Campion at [mccampion@aol.com](mailto:mccampion@aol.com). Add the words VB SIG to the subject line of your email.

---

## WEBMASTERS SIG

---

On July 20, we will meet at 6:30 PM at the Win.Net offices. SIG LEADER John Henderson will present another topic that lies on the edge of web development. John is using the summer meeting to extend the scope of this SIG from just page development to new area's web developers are investigating.

Recent SIG meetings have seen a discussion of legal issues webmasters should be aware of, audio/video streaming and creating a web based radio station.

Every WEBAMSTERS SIG program includes tips or tools that you may use to improve your web site. There is a question and answer time after the main presentation. Those attending are encouraged to ask

members to constructively review their web pages.

The WEBMASTERS SIG is one of 20 similar special interest groups that meet each month in the Greater Louisville area. This KIPCUG event is open to members and non-members that have an interest in creating web sites for personal or commercial use. Go to [www.inetwebmaster.com](http://www.inetwebmaster.com) for the current month's topics, a summary of past meetings, a map, and helpful links. To find out if a topic or presenter changes during the month, please check the web site [www.info.win.net/training.html](http://www.info.win.net/training.html).

We meet on the third Thursday of the month at the offices of Win.Net, 1048 E. Chestnut Street, second floor, at 6:30 PM. Please contact TEAM MEMBER Roger Klingeman by email at [roger@klingeman.win.net](mailto:roger@klingeman.win.net) and include the words WEBMASTERS SIG in the subject line of your message to be added to the mailing list for this SIG.

---

## WINDOWS OS SIG

---

On July 14, we will meet at 6:30 PM in the Computer Lab, Room 222, at CCUM. SIG LEADER Bob Rose will lead the group in updating a laptop from WINDOWS XP to the Beta release of WINDOWS VISTA. Will it go as smooth as claimed or will Bob find some problems that lead to a deeper examination of who can 'fix' a stalled update?

In June, the group found that

upgrades can be very fussy about how they work.

The SIG will focus on maintaining and updating the various Windows OS's to keep them performing at peak efficiency. While our direction will be forward, questions and topics for older formats will be part of the topic list we intend to cover.

The SIG includes topics covering Windows Operating Systems from Windows 95 though XP- SP2, with an emphasis on changing technology. Time is always reserved to resolve problems and answer questions members bring to the meeting. To be sure we can get to your particular issue, please contact SIG LEADER Bob Rose by email at [brittdude@techemail.com](mailto:brittdude@techemail.com) a few days before the meeting so he can have members prepared to address your problem.

The WINDOWS OS SIG currently meets at 6:30 PM in the Computer Lab, Room 222, at CCUM on the second Friday of the month. CCUM is located at 4614 Brownsboro Road, US Hwy. 42 at the Blankenbaker Lane traffic light. Check the KIPCUG web site at [www.KIPCUG.org](http://www.KIPCUG.org) for a map to the meeting site. To be added to the email list, please contact SIG LEADER Bob Rose, [brittdude@techemail.com](mailto:brittdude@techemail.com) and put the words WINDOWS OS SIG in the email subject line.

# Accessing Family Accounts (cont.)

Continued from Page 10  
contact-list cards [www.macmillan-dictionary.com/New-Words/050808-ICE-number.htm]. They commonly check victims' cell phones or PDA directories for entries filed under "ICE" ("in case of emergency") to determine whom to call.

This article originated on AARP's Computers and Technology Web site, www.aarp.org/computers, and is copyrighted by AARP. All rights are reserved; it may be reproduced, downloaded, disseminated, or transferred, for single use, or by nonprofit organizations for educational purposes, with attribution to AARP. It

should be unchanged and this paragraph included. Please e-mail Gabe Goldberg at gabe@gabegold.com when you use it, or for permission to excerpt or condense.

*Editor's Note: This article is distributed by the APGUG Editorial Committee.*



**AM 1080 Thursdays 6:00-7:00 PM**

**www.RadioTechTalk.com**  
making common sense out of high tech.

**Kentucky-Indiana Personal Computer Users Group, Inc.  
KIPCUG  
291 N Hubbards Lane, Suite B-26-318  
Louisville, KY 40207  
www.kipcug.org**

## Membership Application

- Individual - \$40.00 annually Referred by \_\_\_\_\_
- Family - \$55 annually for 2 people in the same household
- Full-Time Student - \$20 annually. Specify school & course of study \_\_\_\_\_  
(Does not include mailing of this Magazine)
- Corporate - \$160 annually for four people from same corporation
- I prefer not to receive notification of KIPCUG events by e-mail

Name: \_\_\_\_\_ Date: \_\_\_\_\_

Address: \_\_\_\_\_

City: \_\_\_\_\_ State: \_\_\_\_\_ Zip: \_\_\_\_\_

Home Phone: \_\_\_\_\_ Work Phone: \_\_\_\_\_ E-Mail: \_\_\_\_\_

If you wish to pay by Visa or MasterCard: Card # \_\_\_\_\_ Exp: \_\_\_\_\_

Signature: \_\_\_\_\_

# GOT VOIP?

Voice Over The Internet

## WE DO!

STANDARD HOME PHONE  
LINES WITH UNLIMITED  
LOCAL AND LONG DISTANCE  
CALLING, AS LOW AS \$36.99  
A MONTH

VOIP SERVICE!  
UNLIMITED LOCAL & LONG  
DISTANCE CALLING FOR AS  
LOW AS \$24.99 A MONTH!  
STOP BY FOR A FREE  
DEMONSTRATION

**YOUR ONE  
STOP SHOP  
FOR ALL YOUR  
TELECOMMUNICATIONS  
NEEDS, AS WELL AS  
CUSTOM BUILT  
COMPUTER  
SYSTEMS**

FREE CELL PHONES!  
SEC CAN NOW SOLVE ALL  
YOUR CELL PHONE NEEDS.  
MOST PLANS AVAILABLE

CABLE AND DSL BROADBAND  
IS JUST A CLICK AWAY WITH  
SEC, YOUR COMPLETE  
SOLUTIONS PROVIDER

Onsite service  
available at  
your home or  
office. Call  
today for an  
appointment.

**SEC**  
CUSTOM  
COMPUTERS

4760 Rockford Plaza  
Louisville, Ky 40216  
502-448-9397

[www.seccomputer.com](http://www.seccomputer.com)

Showroom Hours:  
M-F 10am-6pm est  
Sat 11:am-4pm est



Free in-home  
demonstrations  
available. Call  
for details or  
to set up an  
appointment.

The next General Meeting will be on  
Tuesday, July 11, 2006 @ 6:30 PM (5:30 Free Cook Out)  
4614 Brownsboro Road, Louisville, KY  
Presentation: Wireless Security

**K I P C U G**  
291 N. Hubbards Lane  
Suite B-26-318  
Louisville, KY 40207

Address Service Requested

PRSR STD  
U.S. Postage  
Paid  
Louisville, KY  
Permit No. 1299

**Dated Material**