

COMPUTER ^{User} _{News}

Monthly Publication of the Kentucky-Indiana Personal Computer Users Group

June 2006

Volume 25, No. 06

Program Director	3
Got VoIP?	4
Election and Appointments ...	5
Calling All Volunteers	5
“Looks too Good to be True” on the Net	6
Getting the Most Viewing Space in the Internet Explorer Window	8
Upgrading Your Monitor	9
Google Earth	10
Back to the Future with System Restore	11
Computer Hysteria: The Sentence	13
Membership	13
Directory	14
Calendar	15
SIG Directory	16
SIG Scene	17
Access	17
Advanced Users	18
Digital Photography	18
Excel	19
Genealogy	19,20
Hands On	20
Hardware	21
Intermediate	21
Investing	21
New Users	22
Real Estate	23
Technical Market Analysis ..	23
Utilities	24
Visual Basic	24
Webmasters	24
Windows OS	25
Windows XP Housecleaning ..	26
Membership Application	27

KIPUCUG

Presents

Lightyear

with

VoIP

on

June 6, 2006

General Public is invited to attend.
Free Program Starts at 6:30 PM
Directions - Page 3

www.kipcug.org

KIPUCUG

Advertising Rates for Magazine

Ad size	Rate
Per 1 col. inch (2.25" wide)	12.00
Half Page (3 col x 5")	140.00
Full Page	250.00

NOTE: Magazine is published electronically in addition to its printed edition. Advertising materials must be supplied in electronic form.

Ad sizes must be in full column width and in one inch depth increments.

Discount	Rate
Three consecutive insertions	10%
Twelve consecutive insertions	20%
Special discounts offered to Corporate KIPCUG members (In addition to other discounts)	Call

All Advertising must be paid for at the time of submission or on approved PO. Rates are for **electronic (TIF PDF)** copy in gray scale. The submission deadline for advertising materials is the first of the month for the next month's publication.

Send all advertising materials to editor@kipcug.org.

For advertising information contact Bill Buzan at bill.buzan@insightbb.com or 639-7647.

Magazine Submissions

Articles should be submitted as a Word document and submitted one month in advance. If graphics are included, they should be submitted in TIF file format whenever possible. All graphics must be converted to TIF or PDF file formats before publication.

KIPCUG Supporters

Please support them with your business

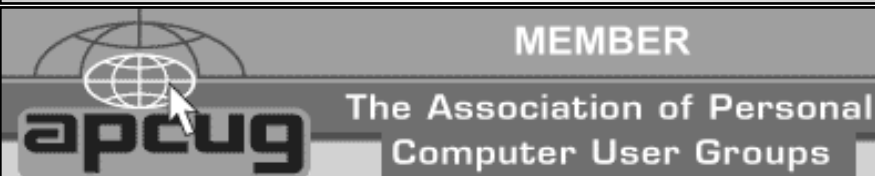
The vendors listed have contributed hardware or software to KIPCUG to assist in production of the organization's monthly newsletter. We encourage you to support these vendors who are helping to support our organization.

Lexmark
Adobe

Optra R+ Laser Printer
PageMaker 6.5

Contributing Staff Writers

Judy Lococo Charley May



KIPCUG is a member of APCUG, an international association of computer user groups. Information is available at www.apcug.org

**KENTUCKY-INDIANA
PERSONAL COMPUTER
USERS GROUP, INC.**

**291 N. HUBBARDS LANE
SUITE B-26-318
LOUISVILLE, KY 40207**

**EDITOR-IN-CHIEF
SUSAN MOORE**

**SIG EDITOR
CATHY TAGGART**

**COPY EDITOR
NANCY WHEELER**

This magazine is published monthly by the Kentucky-Indiana Personal Computer Users Group, Inc. and is intended principally for its membership. All articles in this publication are copyrighted by KIPCUG unless otherwise stipulated.

Express permission is granted for qualified User Groups to copy the materials in this publication provided appropriate credit is given to KIPCUG, Computer User News and the author.

Requests from individuals or organizations other than User Groups for permission to reprint should be made to the Editor.

Advertising materials must be submitted four weeks prior to publication. Editorial submissions must be submitted three weeks prior to publication.

All editorial materials submitted become the property of KIPCUG, and may be used by the organization in any way deemed appropriate by the magazine staff and the Board of Directors of KIPCUG.

The editors reserve the right to make any changes deemed necessary to any editorial matter submitted or to refuse publication of any material submitted.

Direct all magazine correspondence to the Editor at KIPCUG, 291 N. Hubbards Lane, Suite B-26-318, Louisville, KY 40207 or to editor@kipcug.org.

Over the Program Director's Shoulder

By Judy Lococo, KIPCUG

June

I've had a lot of expressed interest in a program about VoIP, i.e., voice over the internet. I'm sure you've seen the Vonage commercials, but who is the provider closest to us? Why, it's Lightyear. And they are definitely coming to tell us all they know at the June KIPCUG Meeting. So if you're wanting to ask the tough questions about this broadband service, make a list and bring it along with you, as well as a friend or two.

We will also have Back to Basics and User to User just like last month.

May



Our visit from Trend Micro was definitely a treat last month. Mark Lewis was the presenter of PC-cillin, but he surprised a whole roomful of people with his antics!

**WERE YOU THERE?
ON APRIL 4
THE NAME DRAWN WAS
MARVIN GRAY
AND HE WAS NOT IN
ATTENDANCE.
NEXT MONTH
THE PRIZE WILL BE
\$40.
WILL YOU BE THERE?**

Mark not only does presentations, but is also a professional storyteller, and I definitely could listen to his various accents without moving! One of his PIG SIG stories was, "What do you call an Irishman who stays out all night?" And the answer was, "Paddy O'Furniture". Mark definitely held everybody's attention after that first anecdote, as nobody knew when the next one was coming, only that it was. And he went back to Oregon with a little Derby Dirt on his shoes.

Our Back to Basics last month on Wireless Networking Security was a bit longer than expected, so if you missed the meeting, you'll have to return in July. My tentative schedule is the continuation of Tom and Wayne's Wireless Security show, only this time it will be more detailed and thorough. And I've asked Matt Mercurio to do our Back to Basics on RSS feeds.

I've tried very hard to get quality meetings for you this past year, and for a while it looked like it was starting to pay off with higher attendance numbers. But evidently, it takes a bit more than just a presenter to get people to come sit down for awhile and listen to good information. We simply

must have more people at our meetings, or else I will not be able to ask a presenter to come. They usually have to fly from the coast to get here, (which takes all day, I might add), but they also have to justify the trip to their marketing department. And

if they can't do that, they won't come. So think about this the next time you walk out of the house, and drive to the meeting solo. You could possibly ask a neighbor, a family member and/or a friend to accompany you.

Back to Basics Topic

Wireless Security

Presented by

Tom Scanlan

and

Wayne Perkey

MEETING DIRECTIONS

Christ Church United Methodist
4614 Brownsboro Road

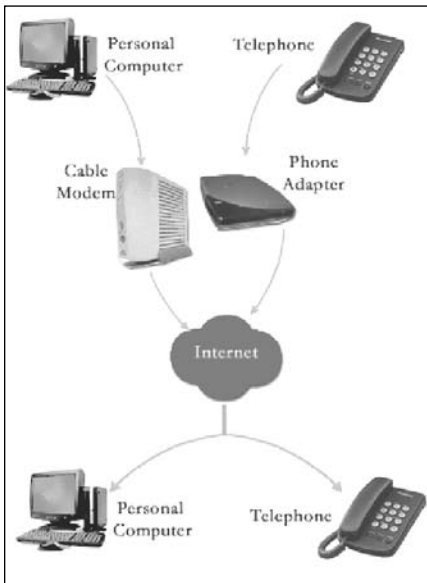
From I-264 (Watterson X-Way) take the US-42/Brownsboro Road exit number 22 turning left onto Brownsboro Road if you were traveling East on I-264 (turn right instead if you were traveling West on I-264). Continue for about 0.6 miles turning left at the traffic light at Blankenbaker Lane and turn left into the Church parking lot. Look for the signs.

Maps are at www.ccum.net and www.kipcug.org

Got VoIP?

By Benny Foster, S.E.C. Custom Computers Inc. and KIPCUG

Even if you have never heard of VoIP, get ready to change the way you think about making local and long distance phone calls. VoIP, Voice over Internet Protocol, is a technology that allows you to make telephone calls using a broadband internet connection instead of a regular phone line. VoIP converts the voice signal from your telephone into a digital signal that travels over the internet and then converts it back at the other end. This enables you the ability to call anyone with a regular telephone number. When placing a call you will hear a dial tone just like you would with a regular phone line and saves consumers up to 50% off their normal phone bill.



To get started lets look a little at the history of VoIP. This concept originated in 1995 when hobbyists started realizing the potential of sending voice data packets over the internet. This allowed users to avoid

long distance charges when making calls. After weeks of research, the first Internet Phone Software I could find appeared in 1995, but displayed poor sound quality and connectivity. Even with the poor quality, it still showed the technology was promising. Over the next five years, VoIP grew by relying on advertisers to subsidize the cost of the service. Quality did not improve much, but the ability to make free long distance calls kept the technology growing. Since 2000, VoIP has grown dramatically in both usage and quality thanks to the introduction of broadband. Today, major voice quality issues have long been addressed. Calls are now clear and most people can not tell the difference in VoIP calls and regular telephone (POTS) calls.

There are many advantages to utilizing VoIP, other than the tremendous cost savings. Since VoIP is digital, many features and services are available which traditional phone companies would charge extra for or not be available at all. Some of these features include but are not limited to; Caller ID, Call Waiting, Voicemail, Three-way Calling, Call Transfer, Call Return, and Call Forwarding. Most companies also offer many call filtering options at little or no additional cost.

While the advantages far exceed the disadvantages, there are a few hurdles for VoIP to overcome in the future. First, VoIP is dependant on wall power. With VoIP, no power means no phone. Second, 911 calls with VoIP can not associate a geographic location with the IP address the call is coming from. A caller must tell where the emergency is

located. And last would be components integrated into your phone line. Digital television subscription services and alarm systems utilize traditional phone lines to update the service and currently can not transmit through VoIP. Both VoIP service providers and the related industries are working to eliminate this problem and I am being told that a solution will be available very soon.

Many research groups expect VoIP to be in over 5 million U.S. homes by the end of 2006. One of the largest VoIP service providers is located right here in Louisville, Lightyear Network Solutions, LLC. Lightyear currently serves over 100,000 customers nationwide providing numerous services, and even offers a 24 hour, seven-days-a-week support call center. I first experienced Lightyear's VoIP service a couple of months ago and I have been sold on their service ever since. I have made many calls, both local and long distance, and have experienced perfect calls each and every time. Here at S.E.C. Custom Computers Inc., we have a VoIP account setup for our customers to try. Stop by, make a call and experience the crystal clear quality of VoIP. Feel free to contact me at any time to assist you in planning or setting up your VoIP service. You can reach me by calling 502-526-4723 or at bfoster@seccomputer.com. Here at S.E.C. Custom Computers we can also assist you with installation at your home or office. Start saving on your phone bills today!

Election and Appointments

By Susan Moore, KIPCUG

The election for the members of the Board of Directors was held at the Annual Business Meeting at the May General Meeting. This was the first time that the members had a choice between candidates and the results were announced at the close of the meeting. The results are:

President

Bill Buzan

Vice-President

John Henderson

Secretary

Winnie Miller

Treasurer

Rosemary Viele

Director of Membership

Tom Denning

Director of SIGs

Charley May

Director of Programs

Judy Lococo

Director of Volunteers

Tom McArdle

Directors at Large

Brian Miller

Susan Moore

Wayne Perkey

Doc Viele

At the May Board Meeting the following appointments for Directors at Large were approved:

Robbie Gibson

Scott Horan

Roger Klingeman

Beverly Setree

Thanks to the Election Helpers

who collected the ballots and tabulated the results:

Finis Gentry

Chuck Russman

Beverly Setree

and their alternates

Dick McGavic

Joe Rothstein

Also thanks to the Election Committee:

Jack Forbes

Robbie Gibson

John Henderson

Brian Miller

Wayne Perkey

Rosemary Viele

Congratulations to all and please give them your support and assistance in the coming year.

Calling all Volunteers

By Susan Moore, KIPCUG

**YES, THAT MEANS
YOU!**

The Board of Directors has asked me to pass on an urgent request to get involved. We NEED volunteers to serve on committees. Each Director will have a committee to assist in the activities of KIPCUG this year. We are looking for people who may not have enough time to serve on the Board of Directors or as a SIG Leader, but who would like to get involved in the activities of KIPCUG. This is YOUR User Group.

Please contact any of the Directors if you would like to help KIPCUG. If you do not know where you would like to help, but are willing to, then you need to contact Tom McArdle, our Director of Volunteers. He will find you a place to help that will both interest you and help KIPCUG. The list of names, phone numbers and email address is on page 14. Please pick one and make that call today.

If you would prefer to help a SIG, either call the SIG Leader for the individual SIG or Charley May, the Director of SIGs. We are trying to revitalize some of the SIGs that have been inactive for awhile. Now

is your chance to help in the effort to increase the number of active SIGs. Charley also has some ideas for some new SIGs. Remember the SIGs are Special Interest Groups where small groups of people can spend more time focusing on the common interests of the members. These names, phone numbers and email addresses are also on page 14 and in the SIG Directory on pages 16-17.

Please remember, KIPCUG is
YOUR USER GROUP.

President' Desk

By Bill Buzan, KIPCUG

Thanks to all the Officers, Directors, Candidates and the membership for the turnout and the interest in voting at KIPCUG. It is our intention as the new Board to initiate new programs, a face lift of the organization and, in general, reinvent KIPCUG where it needs change and to emphasize the great strengths that have been developed

in the past and handed on to us. In order to make a stronger and more appealing KIPCUG, we need the help and direction of all the membership in this endeavor and the Board Members will be calling on everyone for guidance and counsel in the near future. One of the most important things that the membership can do is to individually prepare an assessment of your thoughts of KIPCUG's strengths, weaknesses

and what you would like to see developed within KIPCUG. KIPCUG is all of us and we need to be talking to each other. Help the Board make KIPCUG a National Role Model. Let's make KIPCUG grow and be prosperous. Again, thank you.

"Looks too Good to be True" on the Net

By Ira Wilsker, APCUG Director

Websites:

<http://www.lookstoogoodtobetrue.com>

<http://www.lookstoogoodtobetrue.com/tests.html>

<http://www.usps.com/postalinspectors/dvdorder.htm>

<http://www.lookstoogoodtobetrue.com/alert.html>

<http://www.lookstoogoodtobetrue.com/complaint.html>

<http://www.ic3.gov>

<http://www.usps.com/postalinspectors/fraud/MailFraudComplaint.htm>

<http://www.ftc.gov>



The internet is a wonderful virtual place. For many of us it has become a major source of news, a primary method of communication with others, and a source of merchandise for those willing to shop online.

As a source of news, with the internet, we can access newspapers such as the Examiner from anywhere at anytime, getting the latest in local news. A plethora of national and international news sites provide us with an abundance of news and information from diverse sources, enough to satisfy the most jaded information junkie.

Email, instant messaging, VoIP (voice over internet protocol), webcams, blogs, and other forms of e-communication provide us with an economical and efficient method of communicating with others. An adjunct to email is the ability to conduct our formerly paper based transactions, such as banking tasks, online in a paperless manner.

Gigantic websites, such as EBay, and Amazon, as well as the websites for our local brick-and-mortar stores can allow us to shop to our heart's content in the comfort of our own home on a 24-7 basis. With our current gasoline prices, online shopping may save many barrels of increasingly dear fuel, and allow us

to be more environmentally friendly as we conserve our increasingly scarce natural resources. With the increasing demands that our work and private lives place on our physical time, online shopping may help ease that shortage as well.

As a historical matter of fact, anytime there is something good and decent, there will also be the minority of inevitable miscreants who wish to take unfair advantage of those who are blissfully honest and trusting in their endeavors. The internet is no different than any other commercial enterprise, where the majority of purveyors and users are honest, but a minority of unscrupulous crooks will try and capitalize on the honest folks.

The website at www.lookstoogoodtobetrue.com can provide the innocent web user with information vital to his online transactional safety. This service is a public - private partnership which was developed by federal law enforcement agencies in conjunction with an industry task force. The site is funded by such

Looks too Good (cont.)

diverse entities as the United States Postal Inspection Service and the FBI. Other partners include the National White Collar Crime Center, the Internet Crime Complaint Center, Monster.com, Target, the Merchants Risk Council, the National Cyber-Forensics and Training Alliance, and the Spamhaus Project.

On a consistent basis, I receive spam emails offering cheap home loans, deeply discounted prescription offers, penny stock investment deals, name brand software available at deeply discounted prices, offers from lonely singles and married individuals looking for a good time, and countless other great offers. Also according to some of these emails, I have already won millions by having my email address randomly selected by a European lottery I never entered; by simply wiring the necessary taxes and fees to a foreign entity, I can claim the riches. I have also been adopted by the Nigerian oil minister who needs my personal help in investing his wealth in this country, for which I will be richly rewarded, if only I can forward him the money to pay the taxes and fees to get his wealth out of Nigeria. Millions of websites offer these and other great deals adding the enhanced graphics and multimedia that a website can add to the information included on a simple email. According to the "Looks too good to be true" website all of these offers have one purpose in common, and that is to separate me from my hard earned money. Since the internet is a borderless community, these offers often are made from countries where there is little or no enforcement of any consumer protection laws.

No one forced me to consider taking advantage of these superlative offers, but it is the gullibility of the internet user himself that makes him the victim. Simply deleting the questionable emails without a response, and not going to the illicit websites and entering an order will stifle the attempts of the scammers.

To measure our personal vulnerability to online scams, this site has an online test at www.lookstoogoodtobetrue.com/tests.html which will rate our susceptibility to a variety of online scams.

A strenuous exercise of common sense will go far to protect us from those who wish to take advantage of us while online. The website at lookstoogoodtobetrue.com can provide us with the information requisite to protect us from these scammers. Quoting the site, "Education, good judgment, and a healthy dose of skepticism are the best defenses against becoming a victim. Remember, if it looks too good to be true, it probably is!"

To measure our personal vulnerability to online scams, this site has an online test at www.lookstoogoodtobetrue.com/tests.html which will rate our susceptibility to a variety of online scams. The US Postal Inspection Service has a link on the website, www.usps.com/postalinspectors/dvdorder.htm, where a free DVD can be ordered on fighting the

internet fraud that costs us billions annually, and is especially egregious against many of our senior citizens. The free DVD can also be ordered by calling 1-877-987-3728.

An especially nasty method of draining us of our precious capital is cyber extortion, an increasingly common scam where our files may be unwittingly encrypted or email threats are made against us, and can only relent upon payment of an exorbitant fee. Information on these and other creative scams currently circulating is available at www.lookstoogoodtobetrue.com/alert.html.

Sadly, despite the warnings that have been broadcast and published by the popular media, many of us will still fall victim to an online scammer. Hopefully, we will never need it, but this service has an online complaint mechanism at www.lookstoogoodtobetrue.com/complaint.html. This links directly to the criminal intake systems of the (Federal) Internet Crime Complaint Center (www.ic3.gov), the United State Postal Inspection Service (www.usps.com/postalinspectors/fraud/MailFraudComplaint.htm), and the Federal Trade Commission (www.ftc.gov).

"Looks too good to be true" is an excellent resource, and should be utilized by all internet users to educate themselves about the frauds that we all face while utilizing the otherwise excellent resources of the internet.

Editor's Note: Ira Wilsker is a Columnist for The Examiner, Beaumont TX and a Radio Show Host.

Getting the Most Viewing Space in the Internet Explorer Window

By Glenn Richards, Emeritus Member of the Lake-Sumter Computer Society, Leesburg, FL www.lscs.us

The IE window toolbars can take up a lot of space that could be better used to see web page content. This can be especially critical with small monitors and/or with low resolution settings. But even with my 21" monitor at 1280 by 1024 pixels I like to maximize the viewing area. The graphic below shows my setup (split into two rows to show the detail).

Below the Title bar are the Menu, Standard Buttons, and Address Bars in one row. Below this is the Links Bar that has the full width of the window for its choices. Note that for the Standard Buttons Bar I have reduced the choices to just Back, Forward, Stop, and Refresh. These are the only tools I use frequently. The functions of some other tools can be found under View, Explorer Bar. Make the selection via menu item View, Toolbars, Customize. Also in the Customize Toolbar window are the options to select "Small icons" and to have "No text labels" -

my choices.

Some users may not realize that toolbars can be moved to the row occupied by the Menu Bar, but IE version 6 allows this. To make the move, go to View, Toolbars, and uncheck "Lock the Toolbars." This enables vertical bars at the left end of toolbars. These are "Handles" that can be dragged with the mouse cursor. Once a satisfactory arrangement is found, go back and check "Lock the Toolbars." This insures against accidental rearrangement of the toolbars.

The Links toolbar, a special function of the Favorites menu because Windows and IE make its content available on the toolbar, contains internet shortcuts that I access frequently. Actually, in my system it has more choices than I really need because I have the space for them. And I shorten the references to the web sites they point to to make space for as many as possible. For instance YahMail points to the web page for Yahoo Mail, <http://mail.yahoo.com/>. And NAVUp points to the web site for

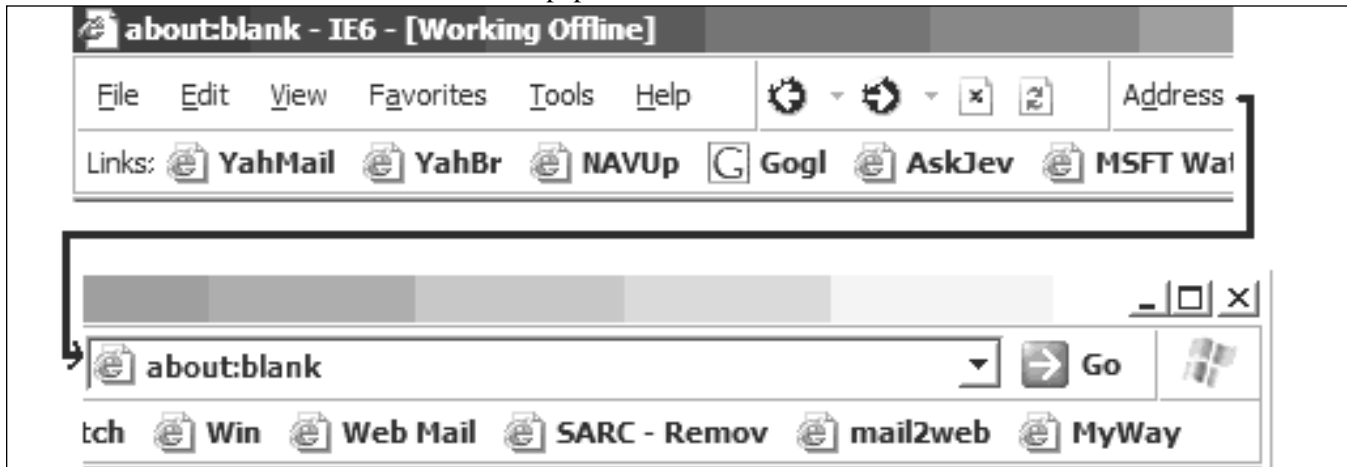
updating Norton Antivirus references, <http://www.sarc.com/avcenter/download/pages/US-N95.html>. The same shortcuts can be found under menu item Favorites, Links.

Another space saver is shortening the IE program name in the Title bar. Typically it is "Microsoft Internet Explorer." Other info in this bar is the web site or other info. I changed the program name to IE6 to make more space. This involved editing the Registry at HKEY_CURRENT_USER\Software\Microsoft\Internet Explorer\Main to have an entry in the Name column of "Window Title" with a Value data of your choice (like IE6).

One last note is that I set the default Home page to Blank to prevent IE from trying to go to a web site when the window is opened.

Remember to tap the F11 key for more space.

Editor's Note: Glenn Richards's email is grich32@yahoo.com. This article is distributed by the APGUG Editorial Committee.



Upgrading Your Monitor

By Vinny La Bash, Member of the Sarasota Personal Computer Users Group, Inc. www.spcug.org



In December, I wrote about buying a PC for 2006, but other than size I was vague about the monitor.

Many more folks than I thought are getting the urge to watch high definition video on their personal computers. If high definition has you captivated, pay attention to the technologies known as HDMI and HDCP.

HDMI or High Definition Media Interface is a technology that connects video receivers and DVD players to devices such as a television. It makes no difference to HDMI if your set is high definition or not. The technology handles both standard and high definition resolutions.

HDCP or High-bandwidth Digital Content Protection is a completely different animal. Intel developed the technology specifically to prevent distortion or any kind of electronic interference between source and receiver. For example, HDCP encrypts the digital content of anything that a device such as a DVD player might send through a Digital Visual Interface (DVI) to a television set, a projector or a computer monitor. The encryption used is not a form of copy protection, but a process designed to protect the integrity of the data. In other words, HDMI makes sure that what is sent is what's received.

It's important to understand that HDCP is content protection, not

copy protection. It won't prevent you from pausing live programming or recording a program to view at a later time. Any content provider that did this would soon be at war with its customers.

As long as features such as "time-shifting" keep appearing, protecting copyright material becomes increasingly difficult. Copyrights are important because without them there is no protection for the artists, authors, and performers who create material or those who use them.

Intel developed the technology specifically to prevent distortion or any kind of electronic interference between source and receiver.

Your home equipment can implement any kind of copy protection, but a content provider might allow no copies whatsoever. Another provider might let you make a limited number of copies. Still another provider might put limitations on how the material is used. Many factors come into play. The mechanism for distribution, source, equipment design, and equipment configuration all have their unique effect. A content provider will usually insist on enforcing its own brand of copy protection.

HDCP makes its appearance at the DVI connection, the last link in the video chain. HDCP makes no decisions on any type of copy protection strategy, it merely protects the choice.

It may be a let down to find out that HDCP isn't an issue yet. However, it will become more important when high definition takes over. Expect all high definition DVD players to eventually use HDCP.

If you own a DVD player that isn't HDCP compliant, you will still be able to use it even if your TV isn't HDCP compliant. You just won't experience high definition quality images. HDCP will restrict playback to standard quality. This prevents pirates from getting perfect copies of movies or other digital content. Upgrades are definitely in most people's future.

Windows Vista will certainly support HDCP, as will upcoming versions of the Mac OS. What it comes down to is if you want to watch high definition content on your computer monitor, the monitor must be HDCP-compliant.

Almost any television set you buy today will use HDCP, but very few computer monitors are HDCP compliant. Do your research carefully. If you want to watch high definition on your monitor, it must be HDCP compliant.

Editor's Note: Vinny La Bash's email is vlabash@home.com. This article is distributed by the APGUG Editorial Committee.

Google Earth

By Joe Schmitt, Member of the Tampa Bay Computer Society, www.tampa-bay.org

One of the greatest tools of the internet has always been that of maps. From the early days of the Internet, www.mapquest.com was a great source for online geography. Now a myriad of new tools is available to home internet users to navigate through the world.

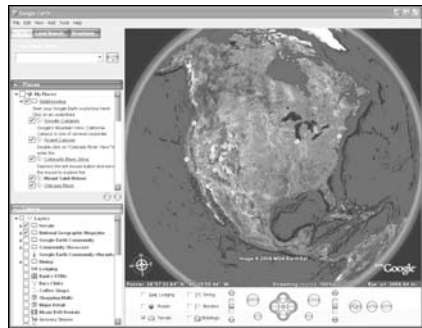
Believe it or not, one of the biggest uses for online maps is not for that big long trip to the Grand Canyon with the kids, but for finding local addresses. How many times recently have you used a service such as www.mapquest.com or maps.google.com to find that new restaurant or new store? While the online services available can be used to find the next route cross-country, they are more often used locally.

Another popular role that current cartographic sites such as map.point.msn.com serve is where a particular place is in relation to your current location. There are many times when we are watching the news and someplace like Jumbo, WV pops up; there is now a great new tool to let you explore the world virtually.

Google Earth (<http://earth.google.com>) is a new offering from Google that offers a unique spin on online cartography. While most mapping services try to offer you a straight forward approach to mapping, Google's newest tool takes quite a different tact. Described by Google as "a globe that sits in your PC", Google Earth offers a new perspective on mapping software. Like all

its major competitors, Google Earth will allow you to find addresses, points of interest, or a driving route. What makes Google Earth different is the way in which items are displayed to the user. Google Earth has to install software on your machine, and once installed it needs an internet connection to display its images. Also be advised that Google Earth is resource intensive: it requires a fairly fast machine with 3D graphics capability.

When you first start up Google Earth you see the image below:



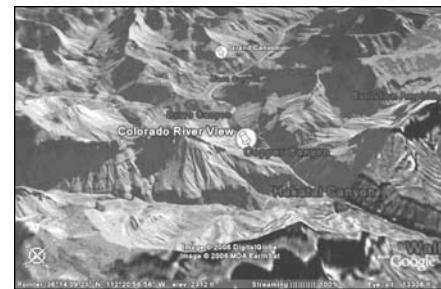
Google Earth generates an image of the planet taken from a mosaic of satellite and aerial photographs. If you enter an address such as your home in the search bar, Google Earth doesn't just pop a map of your neighborhood, but actually flies to the location. You see the image of the earth get larger and larger as if you were descending on the location from outer space. All the time as the planet moves closer, the program continually generates more detailed pictures of the surface until you are sitting above the location you are searching for.

Another great feature of Google Earth is angular display. Not only are dead top center views available, but you can also tilt the plane of the



viewing area to see things in the distance. Now this sounds like I should be able to tilt the image and see the windows on my house, but that just isn't possible. All the images are from satellite or aerial photographs that are also taken from straight overhead.

Topography is another feature that Google Earth incorporates to make the tilting feature quite impressive. Topography is how the terrain rises and falls in any given location. Google earth uses 3D technology to render the rise and fall of the land based on radar data gathered from multiple space shuttle missions. The images are melded with the topography and you have the impression of seeing mountains rise and canyons fall:



Not only does Google Earth provide these new ways to explore the world, but they have also included the ability to include data files of your own. If you choose to upgrade to the "plus" version you can import data from any of the popular GPS

Google Earth (cont.)

(Global Positioning System) receivers currently available. You can import waypoints, routes, and tracks from the unit.

Also, you can import images, such as a topographic map, and orient them as overlays on the satellite images. The application will let you resize and rotate the map until it fits. Google Earth will also let you save data in files that can be shared with other users. One interesting aspect is files that can utilize data available on the web for dynamic interaction. Click on this link to see some examples: <http://earth.google.com/tour/thanks-win.html>. For example, there

is a link to a file that will track flights around the US live. It displays an icon for the plane and shows it in relation to where it is in the air.

Google Earth offers some new and interesting ways to explore our world. With thousands of user files, it can be customized to any number of needs to suit your tastes. A great resource for new ideas involving Google Earth is the Google Earth blog at: <http://www.earthblog.com/> or at the community: <http://bbs.keyhole.com/ubb/ubbthreads.php/Cat/0>

The only limits to Google Earth are what your imagination and determination can achieve.

Joe Schmitt is a computer and technology guru, who also has a love for the outdoors. He can often be found tromping around the woods with his GPS and digital camera.

Editor's Note: Joe Schmitt's email is jschmitt@tampabay.rr.com. This article is distributed by the APGUG Editorial Committee.

Back to the Future with System Restore

By Marjorie Tucker, Member of the Mountain Computer Users Group, Young Harris, GA, <http://mcug.org/>



Did you know that your computer has the ability to go back in time - just like the movie, Back to the Future? Well, it does, using a Windows XP program named System Restore. This built-in Windows program periodically makes an image of your hard drive, much like a backup copy. Then, when you have one of those annoying problems, like losing all of your desktop icons, you can restore that

image to get your computer back in good working order.

You can find System Restore under Start - All Programs - Accessories - System Tools - System Restore. The screen that initially comes up gives you some basic information about this program. It will restore your settings to an earlier point in time, but leave your data completely intact. And, there is no fear of using it since the program is completely reversible.



To begin, you merely click the Next button on the right side of the screen. The next page shows a calendar, open to the current month, with bold numbers indicating the dates when an image was created on your computer. You can also use the arrows at the top of the calendar to go farther back in time, if necessary. You merely choose one of these dates and click again on Next.

The following screen reviews your choice and advises you to close all open programs since System Restore will be restarting your computer. Verify that you want to take this step and then click on the Next button again to start the process.

Be patient because it will take several minutes to perform this action, but eventually your computer will restart itself and it will be back to the restoration time point. If this didn't solve your problem, you can

System Restore (cont.)

run the program again and go even further back in time.

Create Your Own Restore Point

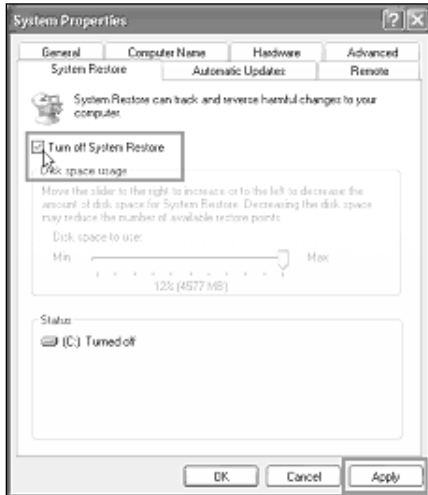


There are times when it would be very nice to know that you have a backup all ready to use - such as just before you start to install that monstrous new program that may destroy your entire computer setup. Well, System Restore will let you create an additional restore point anytime it would be convenient. To do this, merely click on the second choice of the initial System Restore screen, Create a Restore Point. The program will make an instant backup that you can use when that new program fails.

There are Some Cautions

System Restore is very useful tool and you will probably need to use it before long. However, this handy feature can cause problems when

your computer catches a virus or gains an unwanted trojan. Every time your computer creates a new restore backup point, it is also backing up that virus or trojan. That



means that although you get rid of the problem, it has the ability to sneak back into your computer from that backup. For this reason, Symantec and other antivirus software companies suggest that you turn off the System Restore feature before you de-virus your computer.

To turn off System Restore click the Start button, right-click My Computer and left-click Properties. Click the System Restore tab and then check the box labeled "Turn off

system restore." You will be asked if you are certain you want to turn it off; click on OK. System Restore is now turned off. You are now free to get rid of any viruses or trojans without fear that they will immediately return. Just remember to turn System Restore on when you have finished.

Editor's Note: Marjorie Tucker's email is tucker780@verizon.net. This article is distributed by the APGUG Editorial Committee.



Call about KIPCUG Special

**DSL Light
DSL Standard
DSL X-2
Dial-Up with
5X Acceleration**

**Available in Kentucky and
Southern Indiana
6MB DSL and \$199 DSL-T1's
Available in Southern Indiana**

**502-815-7000
(7 Days a Week)**

*"Possibly the best tech
support in the business..."*
PC Magazine

Free Seminars
info.win.net/training.html

Have you visited a SIG lately?

We now have Special Interest Groups. Surely at least one of the SIGs would be of benefit to you.

Check the KIPCUG Planner on page 15 or the

KIPCUG Special Interest Group Directory on

pages 16-17.

Computer Hysteria: The Sentence

By Berry F. Phillips, Member of the Computer Club of Oklahoma City, www.ccokc.org

I was terrified as I faced the Judge of the Spammers' Court awaiting my sentence. The Judge began reviewing my case. "You have been charged with sadistically deleting spam but reading 'ham'. Spam is described as unsolicited (usually commercial, usually unwanted) e-mail messages. 'Ham' is described as real e-mail messages. You are charged with a capital crime, spamocide in the first degree! Since your plea is not guilty, I will review your case."

The defendant's brief contains some material available from CAUCE, The Coalition Against Unsolicited Commercial E-mail which is an ad hoc, all volunteer organization, created by Netizens to advocate for a legislative solution to the problem of UCE (a/k/a "spam"). UCE is the leading complaint of Internet users. But junk e-mail is more than just annoying, it costs Internet users and Internet based businesses billions per year. Junk e-mail is 'postage due' marketing; it is like a telemarketer calling you collect. The economics of junk e-mail encourages massive abuse and because junk e-mailers can get into business very cheaply. The volume of junk e-mail is increasing every day."

Vint Cert, Senior Vice President, MCI and acknowledged "Father of the Internet", is quoted by permission: "Spamming is the scourge of electronic mail and newsgroups on the Internet." It can seriously interfere with the operation of public services, to say nothing of the effect it may have on any individual's e-mail

mail system ... Spammers are, in effect, taking resources away from users and service suppliers without compensation and without authorization."

In 2002, Paul Graham discussed in a paper, "a Plan for Spam", developing Bayesian spam filtering to distinguish between illegitimate spam e-mail from legitimate "ham" e-mail. Many modern mail programs, such as Mozilla's Thunderbird, utilize Bayesian spam filtering. Server-side email filters such as spamassassin and ASSP make use of Bayesian spam filtering techniques, and the functionality is sometimes embedded within the mail server software itself.

While there has been some excellent anti-spam software written, the increasing volume of spam clearly demonstrates the survival adaptability of the spammers. CAUCE indicates that very few legitimate marketers use spam. Spam takes a variety of forms, like chain letters, get rich quick schemes, quack health remedies, porno related products, pyramid marketing, pirated software (Warez), and many more too numerous to mention which can loosely just be called various scams. There are various techniques to get your e-mail address to be placed on a spam list. One that is very common is the offer of free software. In my opinion, deletion is the "ounce of prevention that provides a pound of cure." However, we are losing the war on spam; you may want to join CAUCE's efforts to get legislation to stamp out spammers. If you want to join other Netizens to support the efforts of CAUCE, visit the website for more information at www.cauce.org.

The Judge at the Spammers' Court banged his gavel and pronounced my sentence. You have been found guilty of spamocide in the first degree! I remand you into custody of the processors at the Spammers' Cannery. I shouted at the Judge in the same spirit of Patrick Henry, "If I must be canned, then can me ham NOT spam!"

Thank goodness it was only a dream; I awoke looking at my e-mail client when I had obviously dozed off while deleting spam. However, this article must now end because I have a strange craving for a "ham" sandwich!

Berry Phillips is a member of the CCOKC and a regular writer for the CCOKC website and the eMonitor.

Editor's Note: Berry F. Phillips is a regular writer for the CCOKC website and the eMonitor. His email is bjpdata@gbonline.com. This article is distributed by the APGUG Editorial Committee.

Membership

Tom Denning, KIPCUG

Please welcome KIPCUG's newest members.

ANTHONY J MICHNA

ANNETTE PERKEY

Each new person that you invite to a KIPCUG meeting can earn a FREE month of dues for you if they join as an Individual or Family member! If you liked the Meeting, they will too!

Directory of KIPCUG Leaders

Name	Position	Home	Work	Email Address
Bill Buzan	President	639-7647		president@kipcug.org
John Henderson	Vice-President		812-945-1102	vp@kipcug.org
Winnie Miller	Secretary	895-5360		winnie.miller@worldnet.att.net
Rosemary Viele	Treasurer	452-6878		treasurer@kipcug.org
Judy Lococo	Program Director			judyl@thorobred.win.net
Tom Denning	Membership Director	550-6106		membership@kipcug.org
Tom McArdle	Volunteer Director	458-7269		geezer@insightbb.com
Charley May	SIG Director	425-4604		sig@kipcug.org
Vacant	Publicity Director			
Mike Shaikun	Legal Advisor	425-3326	587-3540	
Joe Rothstein	Review Editor (Acting)			
Robbie Gibson	Director		367-6631	robbie@hostaroo.com
Scott Horan	Director		625-0170	shoran@greaterlouisville.com
Roger Klingeman	Director	245-9518		roger@klingeman.win.net
Brian Miller	Director	749-5892		brian@hostaroo.com
Susan Moore	Director	499-5222		mooresk@win.net, editor@kipcug.org
Wayne Perkey	Director	303-7377		wayne@perkeycomputing.com
Beverly Setree	Director		452-9851	beverly@advanced-grinding.com
Doc Viele	Director	452-6878		aqviele@win.net
Alan Birch	SIG Leader	429-0506		ajbirch@bellsouth.net
Jim Boneck	SIG Leader	812-258-0456	318-2079	jboneck@yahoo.com
Martin Champion	SIG Leader	810-9125		mccampion@aol.com
Grant McCormick	SIG Leader	935-2497		gmccormick@win.net (Preferred)
Bob Rose	SIG Leader	241-1604		britdude@techemail.com
Tom Scanlan	SIG Leader	502-477-1639	477-1639	tpscan@iglou.com
Myron Smith	SIG Leader	897-7718		mjslks@insightbb.com
Jim Travelstead	SIG Leader	375-4796	852-4761	jim.travelstead@louisville.edu

For Your Information

Changes for mailing address, email address or telephone numbers should be sent to Tom Denning, Director of Membership. You can send the change to the KIPCUG mailing address printed on the back of this Magazine or by email to membership@kipcug.org. The KIPCUG Membership Renewal Link is on the web page at www.kipcug.org in the "For Your Information" section or you can access it directly at <http://www.kipcug.org/payment.htm>.

June 2006 KIPCUG Planner

Sunday	Monday	Tuesday	Wednesday	Thursday	Friday	Saturday																																																																																																		
	<table border="1" style="font-size: small; margin: auto;"> <tr><th colspan="7">May 2006</th></tr> <tr><th>S</th><th>M</th><th>T</th><th>W</th><th>T</th><th>F</th><th>S</th></tr> <tr><td>1</td><td>2</td><td>3</td><td>4</td><td>5</td><td>6</td><td></td></tr> <tr><td>7</td><td>8</td><td>9</td><td>10</td><td>11</td><td>12</td><td>13</td></tr> <tr><td>14</td><td>15</td><td>16</td><td>17</td><td>18</td><td>19</td><td>20</td></tr> <tr><td>21</td><td>22</td><td>23</td><td>24</td><td>25</td><td>26</td><td>27</td></tr> <tr><td>28</td><td>29</td><td>30</td><td>31</td><td></td><td></td><td></td></tr> </table>	May 2006							S	M	T	W	T	F	S	1	2	3	4	5	6		7	8	9	10	11	12	13	14	15	16	17	18	19	20	21	22	23	24	25	26	27	28	29	30	31				<table border="1" style="font-size: small; margin: auto;"> <tr><th colspan="7">Jul 2006</th></tr> <tr><th>S</th><th>M</th><th>T</th><th>W</th><th>T</th><th>F</th><th>S</th></tr> <tr><td></td><td>2</td><td>3</td><td>4</td><td>5</td><td>6</td><td>7</td></tr> <tr><td>8</td><td>9</td><td>10</td><td>11</td><td>12</td><td>13</td><td>14</td></tr> <tr><td>15</td><td>16</td><td>17</td><td>18</td><td>19</td><td>20</td><td>21</td></tr> <tr><td>22</td><td>23</td><td>24</td><td>25</td><td>26</td><td>27</td><td>28</td></tr> <tr><td>29</td><td>30</td><td>31</td><td></td><td></td><td></td><td></td></tr> </table>	Jul 2006							S	M	T	W	T	F	S		2	3	4	5	6	7	8	9	10	11	12	13	14	15	16	17	18	19	20	21	22	23	24	25	26	27	28	29	30	31						1 Visual Basic SIG	2	3
May 2006																																																																																																								
S	M	T	W	T	F	S																																																																																																		
1	2	3	4	5	6																																																																																																			
7	8	9	10	11	12	13																																																																																																		
14	15	16	17	18	19	20																																																																																																		
21	22	23	24	25	26	27																																																																																																		
28	29	30	31																																																																																																					
Jul 2006																																																																																																								
S	M	T	W	T	F	S																																																																																																		
	2	3	4	5	6	7																																																																																																		
8	9	10	11	12	13	14																																																																																																		
15	16	17	18	19	20	21																																																																																																		
22	23	24	25	26	27	28																																																																																																		
29	30	31																																																																																																						
4 Articles for Magazine Due 6/6	5 Hardware SIG	6 General Meeting	7	8 Genealogy II SIG Investing SIG	9 Windows OS SIG	10 Basic Access SIG 10:00																																																																																																		
11	12 Excel Basic SIG	13 Board of Directors	14	15 Webmasters SIG New Users South SIG	16 Advanced Users SIG	17																																																																																																		
18	19 New Users Daytime SIG Genealogy SIG	20 Real Estate SIG	21	22 Utilities SIG	23	24 Hands On SIG 2:00																																																																																																		
25	26 Intermediate Users SIG	27 TMA SIG Digital Photography SIG	28	29	30	30 All Monday-Friday Meetings are at 6:30 PM. All Afternoon Meetings are at 2:00 PM.																																																																																																		

KIPCUG Special Interest Group Directory

ACCESS BASIC SIG - Meets at a date and location to be announced. Contact SIG LEADER Alan Birch at ajbirch@bellsouth.net or 429-0506

ACCESS PROGRAMMING SIG - Meetings on Hold - Meets at a date and location to be determined. Contact SIG DIRECTOR Charley May at sigs@kipcug.org or 749-5892

ADVANCED USERS SIG - Meets 6:30 PM on the 3rd Friday of the month at CCUM at 4614 Brownsboro Road (US 42 & Blankenbaker Lane) in the Computer Lab (Room 222). Contact SIG LEADER Tom Scanlan at 1-502-477-1639 or tpscan@iglou.com

COMMUNITY OUTREACH SIG - Meets on the 4th Friday of specified months at Advanced Grinding and Machine Inc, 4644 Illinois Avenue. Contact TEAM MEMBER Beverly Setree at 452-9851 or beverly@advanced-grinding.com

DIGITAL PHOTOGRAPHY SIG - Meets 6:30 PM on the 4th Tuesday of the month at the LFPL-Bon Air Regional, 2816 Del Rio Place. Contact SIG DIRECTOR Charley May at sigs@kipcug.org or 749-5892

EXCEL BASIC SIG - Restarting - Meets 6:30 PM on the 2nd Monday of the month at CCUM at 4614 Brownsboro Road (US 42 & Blankenbaker Lane) in the Computer Lab (Room 222). Contact SIG LEADER Jim Boneck at jboneck@yahoo.com

EXCEL INTERMEDIATE SIG - Meetings on Hold - Meets 6:30 PM on the 2nd Friday of the month at CCUM. Contact SIG DIRECTOR Charley May at sigs@kipcug.org or 749-5892

GENEALOGY SIG - Meets 6:30 PM on the 3rd Monday of the month at the LFPL-Eline Branch at St. Matthews City Hall Building at the corner of Grandview Ave. and Fairfax Ave. about 3 blocks south of Shelbyville Rd. Contact SIG LEADER Susan Moore at 499-5222 or mooresk@win.net (www.win.net/mooresk)

GENEALOGY II SIG - Meets 6:30 PM on the 2nd Thursday of the month at the LFPL-Jeffersontown Branch, 10635 Watterson Trail. Contact SIG LEADER Susan Moore at 499-5222 or mooresk@win.net

HANDS ON SIG - Meets 2:00 PM the 4th Saturday of the month at the LFPL-Eline Branch at St. Matthews City Hall Building at the corner of Grandview Ave. & Fairfax Ave. 3 blocks south of Shelbyville Rd. Contact Co-SIG LEADERS Charley May at sig@win.net or Grant McCormick at gmccormick@win.net or Tom McArdle at usersig@insightbb.com

HARDWARE SIG - Meets 6:30 PM the 1st Monday of the month at the LFPL-Eline Branch at St. Matthews City Hall Building, the corner of Grandview Ave./Fairfax Ave. 3 blocks south of Shelbyville Rd. Contact Co-SIG LEADERS Grant McCormick at gmccormick@win.net or Charley May at sig@win.net or 425-4604

INTERMEDIATE USERS SIG - Meets 6:30 PM on the 4th Monday of the month at CCUM at 4614 Brownsboro Road (US 42 & Blankenbaker Lane) in the Computer Lab (Room 222). Contact SIG LEADER Jim Travelstead at jim.travelstead@louisville.edu or 852-4761(W), 375-4796(H)

INVESTING SIG - Meets 6:30 PM the 2nd Thursday of the month at the Louisville Aero Club, Bowman Field. Contact SIG LEADER Doc Viele at 452-6878

LINUX SIG - Meetings on Hold - Meets at a location and time to be determined. Co-SIG LEADERS Rob Coffey and Jacob Wilkins. Contact TEAM MEMBER Jack Link at redoscar3@yahoo.com

NEW USERS SIG - Meetings on Hold - Meets at a date and location to be announced. Contact SIG LEADER Charley May at sig@win.net

NEW USERS DAYTIME SIG - Meets 2:00 PM on the 3rd Monday of the month at CCUM at 4614 Brownsboro Road (US 42 & Blankenbaker Lane) in the Computer Lab (Room 222). Contact SIG LEADER Winnie Miller at winnie.miller@att.net

NEW USERS SIG SOUTH - NEW - New Date - Meets 6:30 PM on the 3rd Thursday of the month at Resurrection Episcopal Church at 4100 Southern Parkway in the Computer Lab. Contact SIG LEADER Charley May at sig@win.net

PDA SIG - Meetings on Hold - Meets 6:30 PM on the 3rd Tuesday of the month at a location to be determined. Contact SIG DIRECTOR Charley May at sigs@kipcug.org or 749-5892

REAL ESTATE SIG - Meets 6:30 PM on the 3rd Tuesday of the month at CCUM at 4614 Brownsboro Road (US 42 & Blankenbaker Lane) in the Computer Lab (Room 222). Contact SIG LEADER Bill Buzan at re_sig@insightbb.com or 639-7647

TECHNICAL MARKET ANALYSIS SIG - Meets 6:30 PM on the 4th Tuesday of the month at Louisville Free Public Library, Crescent Hill Branch, 2752 Frankfort Avenue in the lower level meeting room. Contact SIG LEADER Myron Smith at 897-7718 or mjslks@insightbb.com

KIPCUG Special Interest Group Directory (cont.)

UTILITIES SIG - Meets 6:30 PM on the 4th Thursday of the month at CCUM at 4614 Brownsboro Road (US 42 & Blankenbaker Lane) in the Computer Lab (Room 222). Contact Co-SIG LEADERS Tom McArdle at usersig@insightbb.com or Charley May at sig@win.net or 425-4604

VISUAL BASIC SIG - Meets 6:30 PM on the 1st Thursday of the month at the LFPL-Bon Air Regional, 2816 Del Rio Place. Contact SIG LEADER Martin Campion 810-9125 or mccampion@aol.com

WEBMASTERS SIG - Meets on the 3rd Thursday of the month at 6:30 PM at Win.Net located at 1048 Chestnut St. Contact SIG LEADER John Henderson at

jh@inetmarketing.com or 812-945-1102

WINDOWS OS SIG - New Date/Location - Meets on the 2nd Friday of the month at 6:30 PM at CCUM at 4614 Brownsboro Road (US 42 & Blankenbaker Lane) in the Computer Lab (Room 222). Contact SIG LEADER Bob Rose at britdude@techemail.com or 241-1604

YOUTH SIG - Meetings on Hold - Meets 6:30 PM on the 4th Friday of the month at CCUM. Contact SIG DIRECTOR Charley May at sigs@kipcug.org or 749-5892

The SIG Scene

By Charley May, KIPCUG

Where to find the scoop on
your Special Interest Group

HEADLINE NEWS

First, I want to thank Brian Miller for the compliment in last month's HEADLINE NEWS and say that it is a lot like coming back to your first love, the KIPCUG SIGs. I look forward to continue building on the legacy of KIPCUG SIGs and want to thank Bill Edwards and Brian Miller for their efforts to provide the SIGs that you have wanted over these last four years while I took my turn as KIPCUG President.

As I mentioned in my December Fireside Chat at the December General Meeting, indicators are showing that the computer industry is now starting into the middle of the next economic turnaround or upturn, which will be good for KIPCUG. The important points here are that we (you, I and others in KIPCUG) jump into the saddle and drive KIPCUG on to higher levels of performance, knowledge and enjoyment in the future. I have already talked to some of you about taking KIPCUG SIGs to higher levels with some new SIGs that you have said you are interested in and I will be asking many of you to help with this new expansion. When I next see you, please be ready with comments like: I would like to help; what can I do; can we start a new SIG?; I can spare a little time to help operate a SIG; tell me where I am needed. Some of the existing SIGs need helpers (TEAM

MEMBERS) and Guest Presenters to take the load off of the SIG LEADERS occasionally and I would like to meet with you and discuss the possibilities.

NOTICE: The NEW USERS SOUTH SIG has moved their meeting day to the third Thursday at 6:30 PM at the Computer Lab in Resurrection Episcopal Church.

KIPCUG SIGs are still looking for NEW meeting places. Please keep your eyes and ears open for new SIG meeting locations and report suggestions KIPCUG SIG DIRECTOR Charley May sigs@win.net or 773-7155 Locations should hold 12-24 persons with Internet connections and, if possible, computers, a white board and a projector for the attendees would be pluses.

ACCESS BASIC SIG

The next meeting for the ACCESS BASIC SIG is June 10 at 10:00 AM. We will meet at Java Brewing. That is in the point where River Road joins US42 in Prospect. That is 4.8 miles on the left, east on US42 from the Watterson or 1.6 miles from the Gene Snyder.

The ACCESS BASIC SIG uses the tools that are available in Access without programming. Users bring problems and we come up with solutions.

If you have topics that you would like discussed, please contact SIG LEADER Alan Birch at ajbirch@bellsouth.net or 429-0506. If you have some tips and tricks to share, we would love to hear them. We

The SIG Scene (cont.)

meet on the second Saturday of the month from 10:00 AM to Noon at Java Brewing.

ACCESS PROGRAMMING SIG

The ACCESS PROGRAMMING SIG has been suspended due to conflicts with the meeting location. We hope to resume meetings when a new meeting location is secured. The ACCESS PROGRAMMING SIG assumes a good working knowledge of Access and focuses on programming and advanced techniques.

If you would like to be notified of the restart of this SIG, you can contact SIG DIRECTOR Charley May at sigs@kipcug.org. Include ACCESS PROGRAMMING SIG in the subject line of your email.

ADVANCED USERS SIG

The June 16 meeting at 6:30 PM will be in the Computer Lab, Room 222, at CCUM. We will dig deeper into finding and rooting out malware, using tools, observation and cunning. We'll also continue discussing how wireless networks and simple security combine.

The May meeting was devoted to two themes. The latest malware threats are evolving faster than almost anyone conceived. We discussed Microsoft's Strider program, threat detection and removal. We also spent time looking at wireless networks, standards and setup.

Windows XP supports enhance-

ments like remote access, network printing and wireless networking. Join us with your laptop as we establish a local network and experiment with XP's network features. We'll also discuss any hot security issues during our Q&A period as our SIG LEADER updates us on IT news, and discuss questions the group might bring up. If we're lucky, we might see a new VISTA in the near future.

Please check out the KIPCUG web site to read details of past and future meeting topics, new announcements and Q&A threads. Visit www.KIPCUG.org and click the Forum tab to see the Advanced Users section.

The ADVANCED USERS SIG explores software and hardware topics of interest to people who are very comfortable with their computer who want to know even more. We encourage everyone to share their experiences so we can all learn and grow into areas we would not normally explore on our own.

We meet in the Computer Lab, Room 222, at Christ Church United Methodist (CCUM) at 6:30 PM on the third Friday of the month. Add yourself to our email alert list by self-registering at groups.yahoo.com/group/KIPCUGAdvUsers or contact Tom at tpscan@iglou.com. Please use ADVANCED USERS SIG as the email subject line.

COMMUNITY OUTREACH SIG

The next SIG meeting will be on July 28 at 6:30 PM at Advanced Grinding and Machine, Inc, 4644

Illinois Ave. in Louisville. We will continue in 2006 on our bi-monthly meeting schedule. At the May 26 meeting, we planned to complete any computer installs that are left and prepare them to be given out. We will also continue to evaluate locations that have been suggested to receive computers.

We are still accepting donations. The COMMUNITY OUTREACH SIG has been designed to take donations of computer equipment and restore them to working condition. These computers can then be distributed to people in need. We are always looking for donations. Even if you think there is no value in your old computer, contact us and let us take it off your hands. We also welcome people willing to help restore computers for distribution.

This SIG has provided PCs to disadvantaged residents of the area and will continue to provide a valuable service to the community. Your participation is greatly appreciated.

The COMMUNITY OUTREACH SIG meets at Advanced Grinding and Machine, Inc, 4644 Illinois Ave. in Louisville at 6:30 PM on the fourth Friday of odd-numbered months except November. To be added to the SIG's advance mailing list, contact TEAM MEMBER Beverly Setree, beverly@advanced-grinding.com. Place the words COMMUNITY OUTREACH SIG in the subject line of your email.

DIGITAL PHOTOGRAPHY SIG

The next scheduled meeting of the

The SIG Scene (cont.)

DIGITAL PHOTOGRAPHY SIG will be Tuesday, June 27, at 6:30 PM at the LFPL Bon Air Branch Library. At the meeting, we will continue looking at the camera equipment we already own or hope to possibly purchase in the future, and continue to see how pictures we have taken or wish to take can be optimized first in the camera and then by the computer. Software will be discussed including continuing examples by Matt Chojnowski using the free program The GIMP.

Any questions on your new cameras, software or printers will also be welcome. Bring those nagging questions, pictures on which you need help (on disk), cameras (with the user manuals), and if you have special software be certain to bring it also.

The specific purpose of this SIG is to examine the software and hardware topics that will make your photographic efforts more fun and rewarding. Members at any level of experience and owners of any type of digital camera are welcome. Again, please be certain to bring your camera, manual and photo CD and we will all increase our ability to understand how digital photography is different from using film.

The DIGITAL PHOTOGRAPHY SIG meets monthly at 6:30 PM on the fourth Tuesday at the LFPL Bon Air Branch Library. Contact Bill Edwards by email at bedwardsna@sbcglobal.net to get advance notice of this SIG. Be certain to put DIGITAL PHOTOGRAPHY in the subject line so that it is not destroyed as SPAM.

EXCEL BASIC SIG

At the 6:30 PM, June 12 meeting in the Computer Lab, Room 222, at CCUM, we will address graphing and using more built-in functions.

The pace of this SIG will be set by the members attending. Each session will start with member questions about home or work projects or last month's material. Feel free to bring in your data or existing spreadsheet. Next is the presentation of new material, followed by the opportunity to practice this material.

At last month's meeting, we examined a user's spreadsheets, adding graphs to highlight information, and learned what "ctrl;" and "ctrl~" do.

The computer lab has computers for your use, but some people bring their laptops so they can practice and ask questions about their particular situation.

The EXCEL BASIC SIG meets at 6:30 PM the second Monday of the month in the CCUM Computer Lab, Room 222. To be put on the email list or if you want to send a question, email Jim Boneck at jboneck@yahoo.com and put EXCEL BASIC SIG in the subject line. Feel free to call him at work 318-2079 or at home 258-0456.

EXCEL INTERMEDIATE SIG

The EXCEL INTERMEDIATE SIG assumes a working knowledge of Excel and familiarity with most

of the Excel icons. There are many, many functions that are available in Excel that few of us realize can make our lives easier.

Due to low attendance, the EXCEL INTERMEDIATE SIG has been suspended. We hope that the SIG will resume soon if KIPCUG members express sufficient interest.

To be added to the email list or to state your interest in this SIG, send an email to SIG DIRECTOR Charley May at sigs@kipcug.org and type "EXCEL INTERMEDIATE SIG" in the subject line. In the meantime, you should attend the EXCEL BASIC SIG with Jim Boneck as the SIG LEADER. That SIG meets on the second Monday of the month at the CCUM Computer Lab.

GENEALOGY SIG

The next GENEALOGY SIG Meeting will be at 6:30 PM on June 19 at our regular location, the LFPL Eline Branch. The presentation topic will be creating a web site with the help of The Master Genealogist. Even if you do not actually want to create a web site, but you want to send your data to some of your relatives, then this is the meeting for you.

Presentation topics for future meetings will include: Research Log, Sources - Examples of Bibliography and End Notes, and Sources - Personal Knowledge.

The last meeting in May was a presentation of Project Explorer and the Tools Menu. The Project Explorer, which is very similar to the navigation in Windows

The SIG Scene (cont.)

Explorer, will display all of the descendants and their spouses for every individual in your dataset. The Tools Menu contains many helpful routines to aid in your research including calendars in several formats and routines to find duplicate and merge duplicate people.

TMG version 6.08 is the most current version available. Be sure to update your program with the free download, if you have not already downloaded it. Now is the time to jump in so that you get all of the tips and tricks. Since we have had new users join us in the last few months, you will not be alone if you are new to The Master Genealogist.

The GENEALOGY SIG meets at the LFPL Eline Branch at 6:30 PM on the third Monday each month. SIG LEADER Susan Moore and all of the SIG's attendees are looking for you to join us at a future meeting. If you have any particular questions before the next meeting, or if you have a topic that you would like to see presented, please email SIG LEADER Susan Moore at mooresk@win.net. If you want a map or directions on how to get to the GENEALOGY SIG, go to www.win.net/mooresk.

GENEALOGY II SIG

The GENEALOGY II SIG will have its next meeting on June 8 at 6:30 PM at the Louisville Free Public Library Jeffersontown Branch.

The SIG had its last meeting on May 11.

This SIG is going to be an infor-

mal Q&A session without any handouts. Topics are not announced ahead of time because the participants will determine the content of the meeting. Short subjects may be presented from time to time when there are insufficient questions.

If you have any particular questions before the next meeting, please email SIG LEADER Susan Moore at mooresk@win.net. If you want a map or directions on how to get to the SIG, please go to www.win.net/mooresk and click on the GENEALOGY II SIG. We meet at 6:30 PM on the second Thursday of each month at the Louisville Free Public Library Jeffersontown Branch.

HANDS ON SIG

Our next meeting will be on June 24 at the Eline Branch of the LFPL in St. Mathews. We start at 2:00 PM and will work with you to get your machine back up and running at top speed. The group can also help you build/upgrade your own PC in just one weekend. It may not always be possible to work on every machine that is not expected, but we resolve most issues by the library closing time.

There is no fixed topic to discuss, just a chance to find some assistance and learn more about your PC. You will need to bring your complete system, monitor, keyboard, mouse, cables and processor. Should you need help getting it up to the meeting room, members will assist you.

At previous meetings, we have worked with various members' sys-

tems with problems like the Operating System not booting up, slow systems and those with security problems. Our work was done without losing any of the programs or data on the computers, to the delight of the computer owners.

If you are not comfortable going it alone, email us in advance and the group will be ready to help you, or help you help yourself. Gain confidence and improve your knowledge base in just a few hours. Members with repair experience are encouraged to drop in and help other members solve nagging problems. All levels of experience are welcomed and we will share our abilities with one another.

Our location has a high-speed web connection and driver updates and patches can be downloaded quickly. We meet on the fourth Saturday of the month at 2:00 PM in the second floor meeting room at the Eline Branch of the LFPL. We often run well into the afternoon to assure your problems are resolved.

If you have a problem machine, contact the Co-SIG LEADERS listed below in advance of the next meeting so that time can be allocated to address your problems. For an advance notice of this SIG, please contact both Co-SIG LEADERS Charley May at sig@win.net and Tom McArdle at usersig@insightbb.com. Please add the words HANDS ON SIG in the subject line of your email. Co-SIG LEADERS Charley May or Tom McArdle or TEAM MEMBER Brad Dudley and other knowledgeable KIPCUG Members will be there to help you with your problems.

The SIG Scene (cont.)

HARDWARE SIG

The SIG will meet on June 5 at 6:30 PM in the second floor meeting room of the Eline Branch of the LFPL in St. Matthews. Co-SIG LEADERS Charley May and Grant McCormick, along with TEAM MEMBERS, will help you with any problems that you might have with your wireless networking. Bring your stuff and get the fix.

At the March, April and May meetings, we reviewed the newest hardware accessories for your home PC. We also reviewed copies of the most recent advertisements and online specials and gave you our own assessment of what the best bargains were. We gave you pricing, part numbers and URLs to help you get started. Time was reserved for answering questions about member's problems at the end of the session.

Do you have a desire to expand the capabilities of your existing system? Do you want to be comfortable with adding your own hard drive, audio or video card, memory module, DVD burner or building your own computer from the ground up? Learn the tips and techniques necessary for a successful hardware upgrade.

Does your machine need help? Contact us so the Co-SIG LEADERS Charley May and Grant McCormick can be ready to assist you with your computer. Do not surprise the group. Let them know in advance that you are bringing your unit. With advance planning, you may not need to bring your complete system to the meeting.

Our regular meeting time is on the first Monday of the month at 6:30 PM in the second floor meeting room of the Eline Branch of the LFPL in St. Matthews. If you would like a reminder of the next meeting and its topic, send an email to Co-SIG LEADER Charley May at sig@win.net. Be sure to put HARDWARE SIG in the subject line of your message.

INTERMEDIATE USERS SIG

At the June 26 meeting of the INTERMEDIATE USERS SIG, which meets in the Computer Lab, Room 222, at CCUM at 6:30 PM, we'll hopefully look at the next beta of Microsoft Office 2007. If Microsoft puts out another Beta of Office before our meeting time, we will look at this new version (this version will not be for sale until January 2007 if it's not delayed). We will go over any new functionality in the basic applications (Word, Excel, PowerPoint, etc).

The July 24 meeting will be a Part 2 on Microsoft Office 2007. At this meeting, we will go over new functionality in Access, Project, and Visio 2007.

At the May meeting of the INTERMEDIATE USERS SIG, we had a Q & A session.

The SIG focuses on the various versions of MS Windows software, its features, methods of operation, problems and all the hints and tips that Jim knows you will be interested in. Topics suggested at meetings usually become future meeting topics. This SIG is for users who are

comfortable with the daily use of their computer and want to learn more. In other words, you have mastered your fear of computers and you are willing to push the envelope a little. We welcome discussion and a chance for everyone to learn.

If you have any questions or suggestions for meeting topics, bring them to the SIG or email Jim at jim.travelstead@louisville.edu or leave them at the INTERMEDIATE USERS SIG area in the KIPCUG forum and Jim will have your answer at the next SIG meeting or before.

Jim is updating his email list. Anyone interested in receiving an email about one week before the meeting should email him with "Add me to the KIPCUG INTERMEDIATE USERS SIG meeting email list" in the subject line. Anyone at the June meeting will be added to this list.

The INTERMEDIATE USERS SIG meets in the Computer Lab, Room 222, at CCUM at 6:30 PM monthly on the fourth Monday. CCUM is at 4614 Brownsboro Road (US 42) at the Blankenbaker Lane traffic light. Directions are on the CCUM web site at www.ccum.net and on the KIPCUG web site at www.kipcug.org.

INVESTING SIG

SIG LEADER Doc Viele moderates the INVESTING SIG discussions, which have been ongoing since 1986. The next SIG meeting will be on June 8. Meetings consist of round table information

The SIG Scene (cont.)

exchanges on any economic subject of current interest. Questions and presentations are encouraged.

The next SIG meeting will include general information on investing and the usual information exchange. The INVESTING SIG meets the second Thursday of the month at the Louisville Aero Club at 6:30 PM. This is not an investment club; they DO NOT discuss mutual funds.

LINUX SIG

With the loss of our meeting place, the LINUX SIG is presently in a state of limbo. At such time that new arrangements can be made, notice of future meetings will be posted in the Computer User News and emailed to list members.

Want to be notified about meeting subjects or do you have a suggestion for future meeting topics? Please send an email to TEAM MEMBER Jack Link at redoscar3@yahoo.com and type "LINUX SIG" in the subject line.

NEW USERS SIG

The date and time of our next meeting will be announced in the SIG Scene when our search for a new meeting location is completed. Also the new location of this SIG will be announced on the website (www.kipucg.org).

If you have any suggestions for an east side location that is stable, free and has computers for us to use, or you would like to join our mailing list, please contact SIG LEADER

Charley May at sig@win.net. Be sure to include NEW USERS SIG in the subject line. We will send you a reminder of our meetings and the topics to be covered a few days before our next meeting.

NEW USERS DAYTIME SIG

June 19 from 2:00 to 4:00 in the Computer Lab, Room 222, at CCUM will be our next class. Join our NEW USERS DAYTIME SIG! As always, we welcome the people new to computers. With practice we hope to make you feel comfortable using the computer at home.

We had a visitor this last month that started computers almost twenty years ago! He had a great time and said he learned new tricks.

Remember, I bring some of the 599CD's in case you want to try out a program before you buy or practice some of the skills the group is not working on. Bring some ear-phones if you would like to do this as some of the computers do not have them.

Bring a small hard drive if you would like to learn how to use it with Documents. Our new computers have a USB in the front of the computer.

Last month I spent time one-on-one with a KIPCUG member. Remember, all guests are welcome to come and see if our SIG has what they need. We look forward to meeting and helping computer users, and maybe they will want to join our group. If you know of someone who is interested in learning a computer from scratch, let

them know about our SIG.

If you are interested in a special program, email me and I will let you know if we can help you.

We meet from 2:00 to 4:00 in the Computer Lab, Room 222, at CCUM on the third Monday of each month. CCUM is located at 4614 Brownsboro Road (US 42) at the Blankenbaker Lane traffic light. To be added to the email list, please send SIG LEADER Winnie Miller an email at winnie.miller@att.net.

NEW USERS SOUTH SIG

The NEW USERS SOUTH SIG will start having its meeting on a new day of the month, June 15, at 6:30 PM at its new location, Resurrection Episcopal Church, 4100 Southern Parkway. This will allow us to use the KIPCUG projector in the Computer Lab. The Lab is on the first floor and you can enter from the back of the building. Look for the KIPCUG NUS SIG sign in the window. Please continue to bring your questions and topics of interest so that we can determine what you want to learn in the SIG.

Our third meeting started with a look at one of those "get your email anywhere programs" and progressed into how to set up a free email address for other uses. Our Q & A session covered some very interesting problems that attendees brought with them and ended with them taking home an understanding of how to solve their problems.

Our new location has 14 computers for new users to receive hands-on training while watching SIG

The SIG Scene (cont.)

LEADER Charley May's presentation on the screen at the front of the room. The training will be geared to the level of most of the attendees and others will be assisted by TEAM MEMBER Star Soledad to help them stay on track. We will start this meeting with more information on how to get started, with time allotted for your questions. Questions on a card or paper are eligible for a door prize drawing. Come visit with us and tell us what you want to learn.

With the NEW USERS SOUTHWEST SIG shutdown for the present and the original NEW USERS SIG still searching for a new meeting location, we are very happy to have a meeting place half-way in-between. If you have any suggestions for an east side location that is stable, free and has computers for us to use, please contact SIG LEADER Charley May. Also, if you would like a reminder of the next meeting and its topic, send an email to Charley at sig@win.net. Be sure to put "NEW USERS SOUTH SIG" in the subject line of your message.

Remember the SIG has changed its meeting day to the third Thursday of each month from 6:30 PM to 8:30 PM. We meet in the first floor Computer Lab at Resurrection Episcopal Church, 4100 Southern Parkway.

PDA SIG

Check out the INTERMEDIATE USERS SIG for information on PDA topics until this SIG is restarted.

There are currently no meetings scheduled for this SIG. Members are requested to let our SIG DIRECTOR know their ideas for this group. If you have a handheld device, we want to hear from you.

This SIG plans to review and explore the hardware and software of Personal Desk Assistants, Smart Phones and like devices. SIG DIRECTOR Charley may encourages all members that are interested in this group to contact him. We expect to cover all versions of PDA's including the newest combination units with phone, PC and photo capabilities.

Members using these devices or that are considering the purchase of a PDA are asked to contact Charley at sigs@kipcug.org. You will be added to a contact list for advance notice of future meetings, topics, times and location.

REAL ESTATE SIG

The REAL ESTATE SIG will meet June 20 at 6:30 PM in the Computer Lab, Room 222, at CCUM. The SIG will continue its analysis and development of software for record keeping and management of Rental Properties. SIG LEADER Bill Buzan will monitor the discussion and lead the membership in its quest for the simplest and most comprehensive program. Future meetings will continue this theme and expand into other aspects of this important subject.

The mission of this SIG is to provide property owners and investors the opportunity to gain a greater insight into the transaction, so that

they can protect their endeavors more effectively. If you have any Real Estate questions, bring them with you and we will try to answer them for you.

If you have any subjects related to Real Estate that you would like to have on the agenda for future meetings or would like to be added to our mailing list, please send your request to Bill Buzan at re_sig@insightbb.com or call (502) 639-7647.

The REAL ESTATE SIG meets monthly on the third Tuesday in the Computer Lab, Room 222, at CCUM at 6:30 PM. CCUM is located at 4614 Brownsboro Road (US 42) at the Blankenbaker Lane traffic light. Directions are on the CCUM web site and are also on the KIPCUG web site at www.kipcug.org.

TECHNICAL MARKET ANALYSIS SIG

On June 27 at 6:30 PM, we will meet at the Louisville Free Public Library, Crescent Hill Branch, 2752 Frankfort Ave. in the lower level meeting room. We will continue to examine the near and long term direction in which the market can be expected to move. We rely on the input of all attending to discuss their review of market indicators and explain the conclusions they have made. This format provides a quick hands-on understanding of the different tools available and which ones best fit your investment strategy.

Additional information will be announced by email to all members

The SIG Scene (cont.)

on our list. With the late date of the SIG's meeting and potential market fluctuations, email is the best way to inform all of our discussion topics.

New attendees are encouraged to come to the meetings to learn about technical analysis and its application to the present market conditions. We generally discuss the present market, and use any web-based indicators available. Many times, we also have someone present topics of interest to anyone using technical analysis.

We are always looking for suggestions for topics of discussion, or suggested presentations by knowledgeable groups or individuals. Please send your ideas or requests to be added to the email distribution list to SIG LEADER Myron Smith at mjslks@insightbb.com. Please include TMA SIG in the subject line. You can also contact Myron at 897-7718.

The TECHNICAL MARKET ANALYSIS SIG meets on the fourth Tuesday of each month, except December, at 6:30 PM at the Louisville Free Public Library, Crescent Hill Branch, 2752 Frankfort Ave. in the lower level meeting room.

UTILITIES SIG

The June 22 meeting will be at 6:30 PM in the Computer Lab, Room 222, at CCUM. Co-SIG LEADER Charley May will lead a discussion of great programs you already own in Windows XP and might not know you have. Fix crashes, set up networks, boost

security, create fonts and more.

In May, we reviewed boot-up boosts and tweaks to your software with Co-SIG LEADER Tom McArdle. He reviewed over two dozen steps to speed-up a home computer.

Members are kept up-to-date with timely messages and answers to their questions at <http://groups.yahoo.com/group/KIPCUGUtilitiesSIG/>. You do not have to be a member of the group to view the messages, but you will need to sign up (free) with Yahoo for full access. Links to sites discussed in our previous meetings are posted there.

Examining a mix of freeware, shareware and retail programs, this SIG hopes to make your computer experience more enjoyable. Members may bring blank CD's to exchange for free and trial versions of featured utilities.

This SIG meets on the fourth Thursday of the month at 6:30 PM in the Computer Lab, Room 222, at CCUM. To be added to our advance notice list, sign up at the Yahoo groups site or contact Co-SIG LEADERS Tom McArdle at usersig@insightbb.com or Charley May at sig@win.net. Please add the words UTILITIES SIG in the subject line of your email.

VISUAL BASIC SIG

The VISUAL BASIC SIG will meet June 1 at 6:30 PM at the Bon Air Regional Branch of the LFPL. This will be a chance for new members to join an open discussion of what can be done with Visual Basic and VBNet. Learn what you can do

on your home computer to create interesting applications to entertain and enrich your PC experience.

In May, we welcomed back SIG LEADER Martin Campion to the group's monthly meeting. It's been awhile since Martin has been with the SIG, but he secured SIG Member Tony Dattilo to present a pari-mutual program he was developing just before Derby.

The VISUAL BASIC SIG meets monthly on the first Thursday at 6:30 PM at the Bon Air Regional Branch of the LFPL, 2816 Del Rio Place. To be added to the email list for a reminder of meetings and topics planned, contact SIG LEADER Martin Campion at mccampion@aol.com. Add the words VB SIG to the subject line of your email.

WEBMASTERS SIG

On June 15, the WEBMASTERS SIG will meet at 6:30 PM at the Win.Net offices. This SIG provides information on building and hosting web sites. The topics for this group are rapidly changing to investigate what is hot in the web development community. Check the group's web site listed below for the latest information on the next meeting.

In May, guest presenter Joe Mays of Win.Net showed the group how to build their own Internet Radio Station using Streaming Audio. The members learned what software to use and the bandwidth requirements needed to make the effort a success.

The SIG consists of a main presentation or discussion, tips & tricks that a webmaster might build

The SIG Scene (cont.)

into their sites, and a Q & A session. Past presentations have included FrontPage, Dreamweaver, how to include video, JavaScript, cascading style sheets, image software, and "What's legal?"

The WEBMASTERS SIG is one of 20 similar special interest groups that meet each month in the Greater Louisville area. This KIPCUG event is open to members and non-members that have an interest in creating web sites for personal or commercial use. Go to www.inetwebmaster.com for the current month's topics, a summary of past meetings, a map, and helpful links. To find out if a topic or presenter changes during the month, please check the web site www.info.win.net/training.html.

We meet on the third Thursday of the month at the offices of Win.Net, 1048 E. Chestnut Street, second floor, at 6:30 PM. Please contact TEAM MEMBER Roger Klingeman by email at roger@klingeman.win.net and include the words WEBMASTERS SIG in the subject line of your message to be added to the mailing list for this SIG.

WINDOWS OS SIG

The next meeting will be June 9 at 6:30 PM in the Computer Lab, Room 222, at CCUM. SIG LEADER Bob Rose will show us Virtual PC and attempt to install a beta version of Vista on his laptop. The group will see how Virtual PC will allow multiple OS's to run on the the same hard drive without fighting each other. It should be an interesting night if everything

works as planned. If it doesn't work as planned, the night might be even more interesting!

In May, Bob provided us with a look at the five new Vista offerings expected to be on the shelves in early 2007. As a bonus, we saw a sneak preview of Office 2007 as well. Vista might not be for every one, but the Office Suite should be the hot release of the year.

The SIG will focus on maintaining and updating the various Windows OS's to keep them performing at peak efficiency. While our direction will be forward, questions and topics for older formats will be part of the topic list we intend to cover.

The SIG includes topics covering Windows Operating Systems from Windows 95 through XP- SP2, with an emphasis on changing technology. Time is always reserved to resolve problems and answer questions members bring to the meeting. To be sure we can get to your particular issue, please contact SIG LEADER Bob Rose by email at brittdude@techemail.com a few days before the meeting so he can have members prepared to address your problem.

The WINDOWS OS SIG currently meets at 6:30 PM in the Computer Lab, Room 222, at CCUM on the second Friday of the month. CCUM is located at 4614 Brownsboro Road, US Hwy. 42 at the Blankenbaker Lane traffic light. Check the KIPCUG web site at www.KIPCUG.org for a map to the meeting site. To be added to the email list, please contact SIG LEADER Bob Rose, brittdude@techemail.com and put the words WINDOWS OS SIG in

the email subject line.

YOUTH SIG

Our host for many KIPCUG events, Christ Church United Methodist, will be working with us to restart this SIG. As CCUM expands its facility, we will work with them to offer this activity for members of both organizations.

We hope to hold a weekend meeting in the Computer Lab. Consideration is being given to offering a computer gaming or an Instant Messaging focus to this group to stimulate youth interest. If you have children or grandchildren with a desire for some additional computer activities, we want to hear from you. Please continue checking the KIPCUG web site for the latest information at www.KIPCUG.org. Saturday meetings are the likely dates for this SIG.

To sign up younger members or to volunteer your assistance, contact SIG DIRECTOR Charley May at sigs@kipcug.org. Please put the words YOUTH SIG in the email subject line.

This SIG's mission is to develop the computer skills of middle school or advanced elementary school students. It will cover topics beyond those basic skills taught in the school system. High school age students can volunteer to assist in this SIG.

Windows XP Housecleaning

By Dick Maybach, Member of the Brookdale Computer User Group, New Jersey, <http://www.bcug.com/>

Unless you are careful, after a period of use Windows will begin to slow down. This occurs because many programs are always active, even though you aren't using them and because the number of files increases, which means that searches take longer. Fortunately, Windows XP contains several tools to help you ease these conditions. Using these tools periodically (every month or two is reasonable) will help you keep your PC lean and mean.

Use Disk Cleanup to delete useless files. Right-click on a disk icon in Windows Explorer (C: will be the most rewarding); then click Properties, click the Disk Cleanup button, and select the actions. (I prefer not to compress old files as I've had bad experiences with compression.) Also be sure to check the actions available under the More Options tab, in particular deleting all but the last restore image. Finally, search all your hard drives for the strings "*.tmp" and "*.dmp" in filenames. Delete anything more than a week or so old; however, Windows will refuse to delete any files it considers important.

Go through your saved e-mail and delete old messages. This will reduce the size of the mail database file and help you to find important e-mail more quickly.

Look at the list of installed programs (Start Control Panel Add or Remove Programs) and remove any you don't use. Most of us find that new software often is less useful than we expected. Also, many PC

manufacturers ship machines with software that we neither ask for nor need. While you're checking, be sure to click on the Add/Remove Windows Components icon in the left margin of the window. You find MS tools that you don't need.

Windows allocates a large portion of your disk space for use by System Restore (Start All Programs Accessories System Tools System Restore System Restore Settings). Select each drive and click on the Settings button. Reduce the Disk Space Usage by moving the slider to no greater than 1 GByte on each of your drives. Use less on small drives, especially if they contain nothing but data.

Check the startup folder for programs that automatically start; you will probably find that you don't want many of these running. Start All Programs Startup to view the contents of the startup folder. To stop a program from starting automatically right click on its icon then click delete. This does not delete the program; it only stops it from being started at boot-up.

Unfortunately, most programs that start automatically don't appear in the startup folder. To disable these, click Start Run and type "msconfig". Click the startup tab and uncheck any programs you don't want to run at startup. When you finish, Windows will ask you to restart. After boot-up you will see a diagnostic screen. On it uncheck the box that displays the diagnostic screen each time you boot.

You can also turn off Windows services that you don't need, but you shouldn't do this unless you are very knowledgeable. However, it doesn't hurt to look at what's running, and

you may learn something. Open the Services window by clicking Start Control Panel Administrative Tools Services and the System Configuration window by clicking Start, then Run, typing "msconfig" and selecting the services tab. Move the windows so you can see both. Clicking on a name in the services window will display a short description. Removing a check mark in the System Configuration window will disable that service, but no matter how confident you are, don't disable any service marked "essential".

Check for unsigned files and drivers; these can be corrupted files or programs not approved by Microsoft. Click Start All Programs Accessories System Tools System Information Tools File Signature Verification Utility Start. The search will take several minutes; then a list will appear showing all the program files without valid signatures. Consider deleting (by using the Add/Remove Programs tool) these.

Another utility you should know about is System Information (Start All Programs Accessories System Tools System Information). This doesn't allow you to change anything, but you can learn a lot about Windows by exploring it. For instance, if you click on the plus box by Software Environment then on Startup Programs, it will show you a list (after a pause) of all the modules that start at boot-up. It shows information in each entry that may enable you to track down a troublesome program. As is common with Windows utilities, you can sort any column by clicking on its header.

If you have problems with a program that ran with an earlier version of Windows, try running them in

Windows XP Housecleaning (cont.)

program compatibility mode. Click Start All Programs Accessories Program Compatibility Wizard Next Next. You will see a list of all the installed programs. Select the troublesome program and a compatibility mode (Win 95, Win NT, Win 98/Me, or Win 2000). Clicking Next brings up a screen allowing you to set a lower resolution on the screen, which may be needed for very old Windows programs.

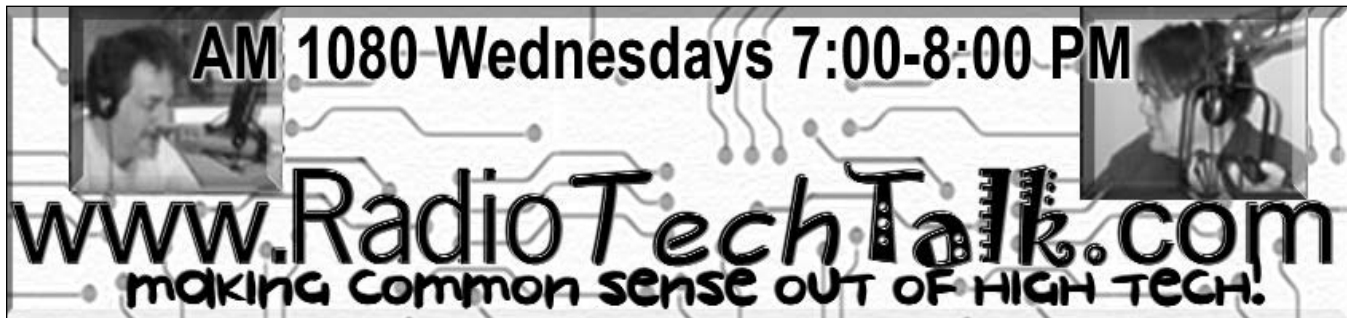
You can tune your PC performance with very little risk, even if you are a novice. Right click on My

Computer in Windows Explorer; then, click Properties Advanced Performance Settings. Usually, checking "Let Windows choose what's best for my computer" is satisfactory, but you might to try "Adjust for best performance" if you machine is slow. If you are more adventuresome, you can select Custom and disable individual features by unchecking items in the list. If you don't like the result, you can just go back to "Let Windows choose what's best for my computer.

After completing the cleanup,

check to see if you should defragment your disks. Right click on a disk icon in Windows Explorer; then click Properties Tools tab Defragment now Analyze button. If Windows says the disk does not need defragmenting, don't do it. Defragging the C: disk takes a long time, and seldom results in any noticeable performance improvement.

Editor's Note: Dick Maybach's email is N2nd@att.net. This article is distributed by the APGUG Editorial Committee.



AM 1080 Wednesdays 7:00-8:00 PM

www.RadioTechTalk.com

making common sense out of high tech.

**Kentucky-Indiana Personal Computer Users Group, Inc.
KIPCUG
291 N Hubbards Lane, Suite B-26-318
Louisville, KY 40207
www.kipcug.org**

Membership Application

- Individual - \$40.00 annually Referred by _____
- Family - \$55 annually for 2 people in the same household
- Full-Time Student - \$20 annually. Specify school & course of study _____
(Does not include mailing of this Magazine)
- Corporate - \$160 annually for four people from same corporation
- I prefer not to receive notification of KIPCUG events by e-mail

Name: _____ Date: _____

Address: _____

City: _____ State: _____ Zip: _____

Home Phone: _____ Work Phone: _____ E-Mail: _____

If you wish to pay by Visa or MasterCard: Card # _____ Exp: _____

Signature: _____

GOT VOIP?

Voice Over The Internet

WE DO!

STANDARD HOME PHONE
LINES WITH UNLIMITED
LOCAL AND LONG DISTANCE
CALLING, AS LOW AS \$36.99
A MONTH

VOIP SERVICE!
UNLIMITED LOCAL & LONG
DISTANCE CALLING FOR AS
LOW AS \$24.99 A MONTH!
STOP BY FOR A FREE
DEMONSTRATION

FREE CELL PHONES!
SEC CAN NOW SOLVE ALL
YOUR CELL PHONE NEEDS.
MOST PLANS AVAILABLE

**YOUR ONE
STOP SHOP
FOR ALL YOUR
TELECOMMUNICATIONS
NEEDS, AS WELL AS
CUSTOM BUILT
COMPUTER
SYSTEMS**

CABLE AND DSL BROADBAND
IS JUST A CLICK AWAY WITH
SEC, YOUR COMPLETE
SOLUTIONS PROVIDER

Onsite service
available at
your home or
office. Call
today for an
appointment.

SEC
CUSTOM
COMPUTERS

4760 Rockford Plaza
Louisville, Ky 40216
502-448-9397

www.seccomputer.com

Showroom Hours:
M-F 10am-6pm est
Sat 11:am-4pm est

Free in-home
demonstrations
available. Call
for details or
to set up an
appointment.

The next General Meeting will be on
Tuesday, June 6, 2006 @ 6:30 PM
4614 Brownsboro Road, Louisville, KY
Presentation: VoIP by Lightyear

K I P C U G
291 N. Hubbards Lane
Suite B-26-318
Louisville, KY 40207

Address Service Requested

PRSR STD
U.S. Postage
Paid
Louisville, KY
Permit No. 1299

Dated Material